



# ALGEBRAIC COMBINATORICS


Cédric Lecouvey & Pierre Tarrago

**Alcove random walks,  $k$ -Schur functions and the minimal boundary of the  $k$ -bounded partition poset**

Volume 4, issue 2 (2021), p. 241-272.

[http://alco.centre-mersenne.org/item/ALCO\\_2021\\_\\_4\\_2\\_241\\_0](http://alco.centre-mersenne.org/item/ALCO_2021__4_2_241_0)

© The journal and the authors, 2021.  
*Some rights reserved.*

 This article is licensed under the  
CREATIVE COMMONS ATTRIBUTION 4.0 INTERNATIONAL LICENSE.  
<http://creativecommons.org/licenses/by/4.0/>

Access to articles published by the journal *Algebraic Combinatorics* on  
the website <http://alco.centre-mersenne.org/> implies agreement with the  
Terms of Use (<http://alco.centre-mersenne.org/legal/>).



*Algebraic Combinatorics* is member of the  
Centre Mersenne for Open Scientific Publishing  
[www.centre-mersenne.org](http://www.centre-mersenne.org)



# Alcove random walks, $k$ -Schur functions and the minimal boundary of the $k$ -bounded partition poset

Cédric Lecouvey & Pierre Tarrago

**ABSTRACT** We use  $k$ -Schur functions to get the minimal boundary of the  $k$ -bounded partition poset. This permits to describe the central random walks on affine Grassmannian elements of type  $A$  and yields a rational expression for their drift. We also recover Rietsch's parametrization of totally nonnegative unitriangular Toeplitz matrices without using quantum cohomology of flag varieties. All the homeomorphisms we define can moreover be made explicit by using the combinatorics of  $k$ -Schur functions and elementary computations based on the Perron–Frobenius theorem.

## 1. INTRODUCTION

A function on the Young graph is harmonic when its value on any Young diagram  $\lambda$  is equal to the sum of its values on the Young diagrams obtained by adding one box to  $\lambda$ . The set of extremal nonnegative such functions (i.e. those that cannot be written as a convex combination) is called the minimal boundary of the Young graph. It is homeomorphic to the Thoma simplex. Kerov and Vershik proved that the extremal nonnegative harmonic functions give the asymptotic characters of the symmetric group. O'Connell's results [17] also show that they control the law of some conditioned random walks. In another but equivalent direction, Kerov–Vershik's approach of these harmonic functions yields both a simple parametrization of the set of infinite totally nonnegative unitriangular Toeplitz matrices (see [4]) and a characterization of the morphisms from the algebra  $\Lambda$  of symmetric functions to  $\mathbb{R}$  which are nonnegative on the Schur functions. These results were generalized in [12] and [13]. A crucial observation here is the connection between the Pieri rule on Schur functions and the structure of the Young graph (which is then called multiplicative in Kerov–Vershik terminology).

There is an interesting  $k$ -analogue  $\mathcal{B}_k$  of the Young lattice of partitions whose vertices are the  $k$ -bounded partitions (i.e. those with no parts greater than  $k$ ). Its oriented graph structure is isomorphic to the Hasse poset on the affine Grassmannian permutations of type  $A$  which are minimal length coset representatives in  $\widetilde{W}/W$ , where  $\widetilde{W}$  is the affine type  $A_k^{(1)}$  group and  $W$  the symmetric group of type  $A_k$ . The graph  $\mathcal{B}_k$  is also multiplicative but we have then to replace the ordinary Schur functions by the  $k$ -Schur functions (see [9] and the references therein) and the algebra  $\Lambda$  by  $\Lambda_{(k)} = \mathbb{R}[h_1, \dots, h_k]$ . The  $k$ -Schur functions were introduced by Lascoux, Lapointe and Morse [11] as a basis of  $\Lambda_{(k)}$ . It was established by Lam [7] that their

---

*Manuscript received 28th June 2018, revised 25th September 2019, accepted 23rd August 2020.*

**KEYWORDS.**  $k$ -Schur functions, harmonic functions, random walks on alcoves.

corresponding constant structures (called  $k$ -Littlewood–Richardson coefficients) are nonnegative. This was done by interpreting  $\Lambda_{(k)}$  in terms of the homology ring of the affine Grassmannian which, by works of Lam and Shimozono, can be conveniently identified with the quantum cohomology ring of partial flag varieties studied by Rietsch [20]. By merging these two geometric approaches one can theoretically deduce that the set of morphisms from  $\Lambda_{(k)}$  to  $\mathbb{R}$ , nonnegative on the  $k$ -Schur functions, are also parametrized by  $\mathbb{R}_{\geq 0}^k$ .

In this paper, we shall use another approach to avoid sophisticated geometric notions and make our construction as effective as possible. Our starting point is the combinatorics of  $k$ -Schur functions. We prove that they permit to get an explicit parametrization of the morphisms  $\varphi$  nonnegative on the  $k$ -Schur functions, or equivalently of all the minimal  $t$ -harmonic functions with  $t \geq 0$  on  $\mathcal{B}_k$ . Both notions are related by the simple equality  $t = \varphi(s_{(1)})$ . Each such morphism is in fact completely determined by its values  $\vec{r} = (r_1, \dots, r_k) \in \mathbb{R}_{\geq 0}^k$  on the Schur functions indexed by the rectangle partitions  $R_a = (k - a + 1)^a$ . We get a bi-continuous (homeomorphism) parametrization which is moreover effective in the sense one can compute from  $\vec{r}$  the values of  $\varphi$  on any  $k$ -Schur function from the Perron–Frobenius vector of a matrix  $\Phi$  encoding the multiplication by  $s_{(1)}$  in  $\Lambda_{(k)}$ . Also, applying the primitive element theorem in the field of fractions of  $\Lambda_{(k)}$  permits to prove that for any fixed  $t \geq 0$ , each  $\varphi(s_\lambda^{(k)})$  is a rational function on  $\mathbb{R}_{\geq 0}^k$ . So, the only place where geometry is needed in this paper is in Lam’s proof of the nonnegativity of the  $k$ -Schur coefficients. As far as we are aware a complete combinatorial  $k$ -Littlewood–Richardson rule is not yet available (see nevertheless [16]).

Random walks on reduced alcoves paths have been considered by Lam in [8]. They are random walks on a particular tessellation of  $\mathbb{R}^k$  by alcoves supported by hyperplanes, where each hyperplane can be crossed only once. The random walks considered in this paper are central and thus differ from those of [8]. Two trajectories with the same ends will have the same probability (see § 6.2 for a comparison between the two models). We characterize all the possible laws of these alcove random walks and also get a simple algebraic expression of their drift as a rational function on  $\mathbb{R}_{\geq 0}^k$ . Our results are more precisely summarized in the following theorem.

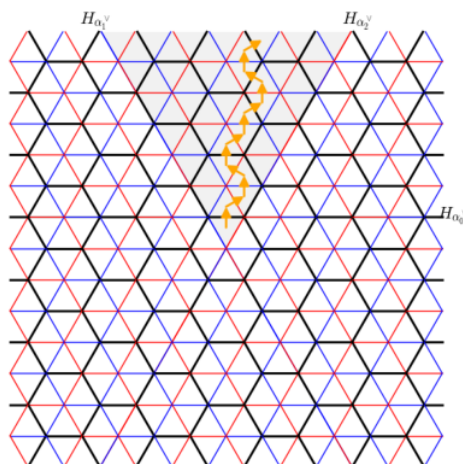


FIGURE 1. A reduced alcove walk on Grassmannian elements for  $k = 2$

THEOREM 1.1.

- (1) To each  $\vec{r} \in \mathbb{R}_{\geq 0}^k$  corresponds a unique morphism  $\varphi : \Lambda_{(k)} \rightarrow \mathbb{R}$  nonnegative on the  $k$ -Schur functions and such that  $\varphi(s_{R_a}) = r_a$  for any  $a = 1, \dots, k$ .
- (2) The previous one-to-one correspondence is a homeomorphism, and  $\varphi$  can be explicitly computed from  $\vec{r}$  by using the Perron–Frobenius theorem.
- (3) The minimal boundary of  $\mathcal{B}_k$  is homeomorphic to a simplex  $\mathcal{S}_k$  of  $\mathbb{R}_{\geq 0}^k$ .
- (4) To each  $\vec{r} \in \mathcal{S}_k$  corresponds a central random walk  $(v_n)_{n \geq 0}$  on affine Grassmannian elements which verifies a law of large numbers. The coordinates of its drift are the image by  $\varphi$  of rational fractions in the  $k$ -Schur functions. They are moreover rational on  $\mathcal{S}_k$ .

As in the case of the Young graph, the description of the minimal boundary of the graph  $\mathcal{B}_k$  yields a parametrization of the set  $T_{\geq 0}$  of infinite totally nonnegative unitriangular  $(k + 1) \times (k + 1)$  Toeplitz matrices. In [20], Rietsch already obtained a parametrization for the variety  $T_{\geq 0}$  from the quantum cohomology of partial flag varieties (see also [21] for an alternative construction using mirror symmetry). More precisely, such a matrix is proved to be completely determined by the datum of its  $k$  initial minors obtained by considering its southwest corners. The main result of the present paper gives, as a corollary, an alternative proof of Rietsch’s parametrization.

COROLLARY 1.2. To each  $\vec{r} \in \mathbb{R}_{\geq 0}^k$  corresponds a unique matrix  $M$  in  $T_{\geq 0}$  whose  $k$  southwest initial minors are exactly  $r_1, \dots, r_k$ . This correspondence yields a homeomorphism from  $T_{\geq 0}$  to  $\mathbb{R}_{\geq 0}^k$ , and each matrix  $M$  in  $T_{\geq 0}$  can be constructed from  $\vec{r}$  by using the Perron–Frobenius theorem.

The paper is organized as follows. In Section 2, we recall some background on alcoves, partitions and  $k$ -Schur functions. In Section 3, we introduce the matrix  $\Phi$  and study its irreducibility. Section 4 uses classical tools of field theory to derive an expression of any  $k$ -Schur function in terms of  $s_{(1)}$  and the  $s_{R_a}$   $a = 1, \dots, k$ . We get the parametrization of all the minimal  $t$ -harmonic functions defined on  $\mathcal{B}_k$  by  $\mathbb{R}_{\geq 0}^k$  in Section 5. In Section 6, we give the law of central random walks on alcoves and compute their drift by exploiting a symmetry property of the matrix  $\Phi$ . Finally, Section 7 presents consequences of our results, notably we rederive Rietsch’s result on finite Toeplitz matrices, establish rational expressions for the  $\varphi(s_{\lambda}^{(k)})$ , characterize the simplex  $\mathcal{S}_k$  and show the inverse limit of the minimal boundaries of the graphs  $\mathcal{B}_k, k \geq 2$  is the Thoma simplex.

Although we restrict ourselves to type  $A$  in this paper, we expect that our approach can be extended to other types notably by using the results of [10] and [19] (see Section 8).

## 2. HARMONIC FUNCTIONS ON THE LATTICE OF $k$ -BOUNDED PARTITIONS

2.1. THE LATTICES  $\mathcal{C}_l$  AND  $\mathcal{B}_k$ . In this section, we refer to [9] and [14] for the material which is not defined. Fix  $l > 1$  a nonnegative integer and set  $k = l - 1$ . Let  $\widetilde{W}$  be the affine Weyl group of type  $A_k^{(1)}$ . As a Coxeter group,  $\widetilde{W}$  is generated by the reflections  $s_0, s_1, \dots, s_k$  so that its subgroup generated by  $s_1, \dots, s_k$  is isomorphic to the symmetric group  $S_l$ . Write  $\ell$  for the length function on  $\widetilde{W}$ . The group  $\widetilde{W}$  determines a Coxeter arrangement by considering the hyperplanes orthogonal to the roots of type  $A_k^{(1)}$ . The connected components of this hyperplane arrangement yield a tessellation of  $\mathbb{R}^k$  by alcoves on which the action of  $\widetilde{W}$  is regular. We denote by  $A^{(0)}$  the fundamental alcove. Write  $\widetilde{R}$  for the set of affine roots of type  $A_k^{(1)}$  and  $R$  for its subset of classical roots of type  $A_k$ . The simple roots are denoted by  $\alpha_0, \dots, \alpha_k$  and  $P$  is the weight lattice of type  $A_k$  with fundamental weights  $\Lambda_1, \dots, \Lambda_k$ .

A reduced alcove path is a sequence of alcoves  $(A_1, \dots, A_m)$  such that  $A_1 = A^{(0)}$  and for any  $i = 1, \dots, m - 1$ , the alcoves  $A_{i+1}$  and  $A_i$  share a common face contained in a hyperplane  $H_i$  so that the sequence  $H_1, \dots, H_{m-1}$  is without repetition (each hyperplane can be crossed only once). In the sequel, all the alcove paths we shall consider will be reduced. For any  $i = 1, \dots, m - 1$ , let  $w_i$  be the unique element of  $\widetilde{W}$  such that  $A_i = w_i(A^{(0)})$ . Write  $\triangleleft$  for the weak Bruhat order on  $\widetilde{W}$  and  $\rightarrow$  for the covering relation  $w \rightarrow w'$  if and only if  $w \triangleleft w'$  and  $\ell(w') = \ell(w) + 1$ . We then have  $w_1 \rightarrow w_2 \rightarrow \dots \rightarrow w_m$ .

We shall identify a partition and its Young diagram. Recall that an  $l$ -core can be seen as a partition where no box has hook length equal to  $l$ . Given an  $l$ -core  $\lambda$ , we denote by  $\ell(\lambda)$  its length which is equal to the number of boxes of  $\lambda$  with hook length less than  $l$ . Recall that the residue of a box in a Young diagram is the difference modulo  $l$  between its row and column indices. We can define an arrow  $\lambda \xrightarrow{i} \mu$  between the two  $l$ -cores  $\lambda$  and  $\mu$  when  $\lambda \subset \mu$  and all the boxes in  $\mu/\lambda$  have the same residue  $i$ . By forgetting the label on the arrows, we get the structure of a graded rooted graph  $\mathcal{C}_l$  on the  $l$ -cores. For any two vertices  $\lambda \rightarrow \mu$  we have  $\ell(\mu) = \ell(\lambda) + 1$ . Nevertheless, the difference between the rank of the partitions  $\lambda$  and  $\mu$  is not immediate to get in general.

The affine Grassmannian elements are the elements  $w \in \widetilde{W}$  whose associated alcoves are exactly those located in the fundamental Weyl chamber (that is, in the Weyl chamber containing the fundamental alcove  $A^{(0)}$ ). The  $l$ -cores are known to parametrize the affine Grassmannian elements. More precisely, given two  $l$ -cores such that  $\lambda \xrightarrow{i} \mu$  and  $w$  the affine Grassmannian element associated to  $\lambda$ ,  $w' = ws_i$  is the affine Grassmannian element associated to  $\mu$ . In particular, we get  $\ell(\lambda) = \ell(w)$ . So reduced alcove paths in the fundamental Weyl chamber, saturated chains of affine Grassmannian elements and paths in  $\mathcal{C}_l$  naturally correspond.

A  $k$ -bounded partition is a partition  $\lambda$  such that  $\lambda_1 \leq k$ . There is a simple bijection between the  $l$ -cores and the  $k$ -bounded partitions. Start with a  $l$  core  $\lambda$  and delete all the boxes in the diagram of  $\lambda$  having a hook length greater than  $l$  (recall there is no box with hook length equal to  $l$  since  $\lambda$  is an  $l$ -core). This gives a skew shape and to obtain a partition, move each row so obtained to the left. The result is a  $k$ -bounded partition denoted  $\mathfrak{p}(\lambda)$ . For some examples and the inverse bijection  $\mathfrak{c}$ , see [9, pages 18 and 19]. This bijection permits to define an analogue of conjugation for the  $k$ -bounded partitions. Given a  $k$ -bounded partition  $\kappa$  set

$$\kappa^{\omega_k} = \mathfrak{p}(\mathfrak{c}(\kappa)').$$

The graph  $\mathcal{B}_k$  is the image of the graph  $\mathcal{C}_l$  under the bijection  $\mathfrak{p}$ . This means that  $\mathcal{B}_k$  is the graph obtained from  $\mathcal{C}_l$  by deleting all the boxes with hook length greater than  $l$  and next by aligning the rows obtained to the left. In particular, reduced alcove paths in the fundamental Weyl chamber correspond to  $k$ -bounded partitions paths in  $\mathcal{B}_k$ . We have the following lemma:

LEMMA 2.1. *We have an arrow  $\kappa \rightarrow \delta$  in  $\mathcal{B}_k$  if and only if  $|\delta| = |\kappa| + 1$ ,  $\kappa \subset \delta$  and  $\kappa^{\omega_k} \subset \delta^{\omega_k}$ .<sup>(1)</sup>*

Let  $\Lambda$  be the algebra of symmetric functions in infinitely many variables over  $\mathbb{R}$ . It is endowed with a scalar product  $\langle \cdot, \cdot \rangle$  such that  $\langle s_\lambda, s_\mu \rangle = \delta_{\lambda, \mu}$  for any partitions  $\lambda$  and  $\mu$ . Let  $\Lambda_{(k)}$  be the subalgebra of  $\Lambda$  generated by the complete homogeneous functions  $h_1, \dots, h_k$ . In particular,  $\{h_\lambda \mid \lambda \text{ is } k\text{-bounded}\}$  is a basis of  $\Lambda_{(k)}$ .

<sup>(1)</sup>So  $\mathcal{B}_k$  should not be confused with the subgraph of the Young graph with vertices the  $k$ -bounded partitions.

2.2. THE  $k$ -SCHUR FUNCTIONS. We now define a distinguished basis of  $\Lambda_{(k)}$  related to the graph structures of  $\mathcal{C}_l$  and  $\mathcal{B}_k$ . Consider  $\lambda$  and  $\mu$  two  $k$ -bounded partitions with  $\lambda \subset \mu$  and  $r \leq k$  a positive integer.

DEFINITION 2.2. We will say that  $\mu/\lambda$  is a weak horizontal strip of size  $r$  when

- (1)  $\mu/\lambda$  is an horizontal strip with  $r$  boxes (i.e. the boxes in  $\mu/\lambda$  belong to different columns),
- (2)  $\mu^{\omega_k}/\lambda^{\omega_k}$  is a vertical strip with  $r$  boxes (i.e. the boxes in  $\mu^{\omega_k}/\lambda^{\omega_k}$  belong to different rows).

Let us now define the notion of  $k$ -bounded semistandard tableau of shape  $\lambda$  a  $k$ -bounded partition and weight  $\alpha = (\alpha_1, \dots, \alpha_d)$  a composition of  $|\lambda|$  with no part larger than  $k$ .

DEFINITION 2.3. A  $k$ -bounded semistandard tableau of shape  $\lambda$  is a semistandard filling of  $\lambda$  with integers in  $\{1, \dots, d\}$  such that for any  $i = 1, \dots, d$  the boxes containing  $i$  define a weak horizontal strip of size  $\alpha_i$ .

One can prove that for any  $k$ -bounded partitions  $\lambda$  and  $\alpha$  the number  $K_{\lambda, \alpha}^{(k)}$  of  $k$ -bounded semistandard tableaux of shape  $\lambda$  and weight  $\alpha$  verifies

$$K_{\lambda, \lambda}^{(k)} = 1 \text{ and } K_{\lambda, \alpha}^{(k)} \neq 0 \implies \alpha \leq \lambda$$

where  $\leq$  is the dominant order on partitions.

DEFINITION 2.4. The  $k$ -Schur functions  $s_{\kappa}^{(k)}$ ,  $\kappa \in \mathcal{B}_k$  are the unique functions in  $\Lambda_{(k)}$  such that

$$h_{\delta} = \sum_{\delta \leq \kappa, \kappa \in \mathcal{B}_k} K_{\kappa, \delta}^{(k)} s_{\kappa}^{(k)}$$

for any  $\delta$  in  $\mathcal{B}_k$ .

PROPOSITION 2.5 (Pieri rule for  $k$ -Schur functions). For any  $r \leq k$  and any  $\kappa \in \mathcal{B}_k$  we have

$$(1) \quad h_r s_{\kappa}^{(k)} = \sum_{\varkappa \in \mathcal{B}_k} s_{\varkappa}^{(k)}$$

where the sum is over all the  $k$ -bounded partitions  $\varkappa$  such that  $\varkappa/\kappa$  is a weak horizontal strip of size  $r$  in  $\mathcal{B}_k$ .

When  $r = 1$ , the multiplication by  $h_1$  is easily described by considering all the possible  $k$ -bounded partitions at distance 1 from  $\kappa$  in  $\mathcal{B}_k$ . Thanks to a geometric interpretation of the  $k$ -Schur functions in terms of the homology of affine Grassmannians, Lam showed that the product of two  $k$ -Schur functions is  $k$ -Schur positive:

THEOREM 2.6 ([7, Corollary 8.2]). Given  $\kappa$  and  $\delta$  two  $k$ -bounded partitions, we have

$$s_{\kappa}^{(k)} s_{\delta}^{(k)} = \sum_{\nu \in \mathcal{B}_k} c_{\lambda, \delta}^{\nu(k)} s_{\nu}^{(k)}$$

with  $c_{\lambda, \delta}^{\nu(k)} \in \mathbb{Z}_{\geq 0}$ .

2.3. SOME PROPERTIES OF  $k$ -SCHUR FUNCTIONS. The  $k$ -conjugation operation  $\omega_k$  can be read directly at the level of  $k$ -bounded partitions without using the ordinary conjugation operations on the  $l$ -cores (see (1.9)) in [9]). To do this, start with a  $k$ -bounded partition  $\lambda = (\lambda_1, \dots, \lambda_r)$  and decompose it into its chains  $\{c_1, c_2, \dots, c_r\}$  where each chain is a sequence of parts of  $\lambda$  obtained recursively as follows. The procedure is such that any part  $\lambda_i$  is in the same chain as the part  $\lambda_{i+k-\lambda_i+1}$  when  $i+k-\lambda_i+1 \leq r$  (from the part  $\lambda_i$  one jumps  $k-\lambda_i$  parts to get the following part of

the chain). Observe in particular that all the parts with length  $k$  belong to the same chain for in this case we jump 0 parts. Once the chains  $c_i$  are determined,  $\lambda^{\omega_k}$  is the partition with  $k$ -columns whose lengths are the sums of the  $c_i$ 's.

EXAMPLE 2.7. Consider the 5-partition  $\lambda = (\mathbf{5}, \mathbf{5}, \mathbf{5}, \mathbf{4}, \mathbf{4}, \mathbf{3}, \mathbf{3}, \mathbf{3}, \mathbf{2}, \mathbf{2}, \mathbf{1})$ . Then, we get  $c_1 = \{5, 5, 5, 4, 3, 2\}$  next  $c_2 = \{4, 3, 2\}$ ,  $c_3 = \{3, 1\}$ ,  $c_4 = \emptyset$  and  $c_5 = \emptyset$ . So  $\lambda^{\omega_5}$  is the partition with columns of heights 24, 9 and 4.

The following facts will be useful.

- (1) Any partition  $\lambda$  of rank at most  $k$  is a  $k$ -bounded partition and is then equal to its associated  $l$ -core (because  $\lambda$  has no hook of length  $l = k + 1$ ).
- (2) The lattice  $\mathcal{B}_k$  coincides with the ordinary Young lattice on the partitions of rank at most  $k$ . On this subset  $\omega_k$  is the ordinary conjugation.
- (3) For any partition  $\lambda$  of rank at most  $k$ , the  $k$ -Schur function coincides with the ordinary Schur function that is  $s_\lambda^{(k)} = s_\lambda$ . In particular, the homogeneous functions  $h_1, \dots, h_k$  and the elementary functions  $e_1, \dots, e_k$  are the  $k$ -Schur functions corresponding to the rows and columns partitions with at most  $k$  boxes, respectively.

The  $k = 2$  case is easily tractable because the lattice of 2-bounded partitions we consider has a simple structure. One verifies easily that for any 2-bounded partition  $\lambda = (2^a, 1^{n-2a})$ , we get in that case

$$s_\lambda^{(2)} = \begin{cases} h_2^a e_2^{\frac{n}{2}-a} & \text{when } n \text{ even,} \\ h_2^a e_2^{\frac{n-1}{2}-a} e_1 & \text{when } n \text{ is odd.} \end{cases}$$

When  $k > 2$ , the structure of the graph  $\mathcal{B}_k$  becomes more complicated. Given a  $k$ -bounded partition  $\lambda$  one can first precise where it is possible to add a box in the Young diagram of  $\lambda$  to get an arrow in  $\mathcal{B}_k$ . Assume we add a box in the row  $\lambda_i$  of  $\lambda$  to get the  $k$ -bounded partition  $\mu$ , denote by  $c = \{\lambda_{i_1}, \dots, \lambda_{i_r}\}$  the chain containing  $\lambda_i$  where we have  $\lambda_i = \lambda_{i_a}$  with  $a \in \{1, \dots, r\}$ . Observe we can add components equal to zero to  $c$  if needed since  $\lambda$  is defined up to an arbitrary number of zero parts. The following lemma permits to avoid the use of  $\omega_k$  in the construction of  $\mathcal{B}_k$ .

LEMMA 2.8. *There is an arrow  $\lambda \rightarrow \mu$  in  $\mathcal{B}_k$  if and only if  $\lambda_{i_b-1} = \lambda_{i_b}$  for any  $b = a + 1, \dots, r$ , that is if and only if each part located up to  $\lambda_i$  in the chain containing  $\lambda_i$  is preceded by a part with the same size.*

*Proof.* One verifies that if the previous condition is not satisfied,  $\mu^{\omega_k}$  and  $\lambda^{\omega_k}$  will differ by at least two boxes and if it is satisfied by only one as desired.  $\square$

EXAMPLE 2.9.

- (1) One can always add a box in the first column of  $\lambda$  since the parts located up to the part 0 are all equal to 0.
- (2) Assume  $k = 2$ , then we can add a box to the part  $\lambda_i$  equal to 1 to get a part equal to 2 if and only if there is an even number of parts equal to 1 up to  $\lambda_i$ . This is equivalent to saying that  $\lambda$  has an odd number of parts equal to 1, that is that the rank of  $\lambda$  is odd since the other parts are equal to 2 (or 0).

For any  $a = 1, \dots, k$ , let  $R_a$  be the rectangle partition  $(k - a + 1)^a$ . The previous observations can be generalized (see [7, Corollary 8.3] and [9, Section 4]):

PROPOSITION 2.10.

- (1) *Assume  $\lambda$  is a  $k$ -bounded partition which is also a  $(k + 1)$ -core. Then  $s_\lambda^{(k)} = s_\lambda$  (that is the  $k$ -Schur and the Schur functions corresponding to  $\lambda$  coincide).*

- (2) In particular, for any rectangle partition  $R_a$ , we have  $s_{R_a}^{(k)} = s_{R_a}$ .
- (3) For any  $a = 1, \dots, k$  and any  $k$ -bounded partition  $\lambda$  we have

$$s_{R_a} s_{\lambda}^{(k)} = s_{\lambda \cup R_a}^{(k)}$$

where  $\lambda \cup R_a$  is obtained by adding  $a$  times a part  $k - a + 1$  to  $\lambda$ .

**COROLLARY 2.11.** For each  $k$ -bounded partition  $\lambda$ , there exists a unique irreducible  $k$ -bounded partition<sup>(2)</sup>  $\tilde{\lambda}$  and a unique sequence of nonnegative integers  $p_1, \dots, p_k$  such that

$$s_{\lambda}^{(k)} = \prod_{a=1}^k s_{R_a}^{p_a} s_{\tilde{\lambda}}^{(k)}.$$

In particular, the  $k$ -Schur functions are completely determined by the  $k$ -Schur functions indexed by the irreducible  $k$ -bounded partitions and by the ordinary Schur functions  $s_{(k-a+1)^a}$ ,  $a = 1, \dots, k$ .

**REMARK 2.12.** Write  $\mathcal{P}_{\text{irr}}$  for the set of irreducible partitions. The map  $\Delta : \mathcal{B}_k \rightarrow \mathcal{P}_{\text{irr}} \times \mathbb{Z}_{\geq 0}^k$  which associates to each  $k$ -bounded partition  $\lambda$  the pair  $(p, \lambda)$  where  $p = (p_1, \dots, p_k)$  is a bijection.

**EXAMPLE 2.13.** Assume  $k = 4$  and  $\lambda = (4, 4, 3, 3, 3, 3, 3, 2, 2, 2, 2, 1, 1, 1, 1)$ . Then we get  $\tilde{\lambda} = (3, 2, 1)$  and

$$s_{\lambda}^{(k)} = s_{(4)}^2 s_{(3,3)}^2 s_{(2,2,2)} s_{(1,1,1,1)} s_{\tilde{\lambda}}^{(k)}.$$

We conclude this paragraph by recalling other important properties of  $k$ -Schur functions. We have first the inclusions of algebras  $\Lambda_{(k)} \subset \Lambda_{(k+1)} \subset \Lambda$ .

**PROPOSITION 2.14** (see [9, Section 4]).

- (1) Each  $k$ -Schur function has a positive expansion on the basis of  $(k + 1)$ -Schur functions.
- (2) Each  $k$ -Schur function has a positive expansion on the basis of ordinary Schur functions.

#### 2.4. HARMONIC FUNCTIONS AND MINIMAL BOUNDARY OF $\mathcal{B}_k$ .

**DEFINITION 2.15.** A function  $f : \mathcal{B}_k \rightarrow \mathbb{R}$  is said harmonic when

$$f(\lambda) = \sum_{\lambda \rightarrow \mu} f(\mu) \text{ for any } \lambda \in \mathcal{B}_k.$$

We denote by  $\mathcal{H}(\mathcal{B}_k)$  the set of harmonic functions on  $\mathcal{B}_k$ .

Another way to understand harmonic functions is to introduce the infinite matrix  $\mathcal{M}$  of the graph  $\mathcal{B}_k$ . The harmonic functions on  $\mathcal{B}_k$  then correspond to the right eigenvectors for  $\mathcal{M}$  associated to the eigenvalue 1. One can also consider  $t$ -harmonic functions which correspond to the right eigenvectors for  $\mathcal{M}$  associated to the eigenvalue  $t$ . Clearly  $\mathcal{H}(\mathcal{B}_k)$  is a vector space over  $\mathbb{R}$ . In fact, we mostly restrict ourself to the set  $\mathcal{H}^+(\mathcal{B}_k)$  of positive harmonic functions for which  $f$  takes values in  $\mathbb{R}_{\geq 0}$ . Then,  $\mathcal{H}^+(\mathcal{B}_k)$  is a cone since it is stable under addition and multiplication by a positive real. To study  $\mathcal{H}^+(\mathcal{B}_k)$ , we only have to consider its subset  $\mathcal{H}_1^+(\mathcal{B}_k)$  of normalized harmonic functions such that  $f(1) = 1$ . In fact,  $\mathcal{H}_1^+(\mathcal{B}_k)$  is a convex set and its structure is controlled by its extremal subset  $\partial\mathcal{H}^+(\mathcal{B}_k)$ .

<sup>(2)</sup>A  $k$ -bounded partition is called irreducible when it contains less or equal to  $a$  parts equal to  $k - a$  for any  $a = 0, \dots, k - 1$ . Otherwise it is called reducible.



We aim to characterize the extremal positive harmonic functions defined on  $\mathcal{B}_k$  and obtain a simple parametrization of  $\partial\mathcal{H}^+(\mathcal{B}_k)$ . By using the Pieri rule on  $k$ -Schur functions, we get

$$s_\lambda s_{(1)} = \sum_{\lambda \rightarrow \mu} s_\mu$$

for any  $k$ -bounded partitions  $\lambda$  and  $\mu$ . This means that  $\mathcal{B}_k$  is a so-called multiplicative graph with associated algebra  $\Lambda_{(k)}$ . Moreover, if we denote by  $K$  the positive cone spanned by the set of  $k$ -Schur functions, we can apply the ring theorem of Kerov and Vershik (see for example [13, Section 8.4]) which characterizes the subset of extreme points  $\partial\mathcal{H}^+(\mathcal{B}_k)$ . Denote by  $\text{Mult}^+(\Lambda_{(k)}) \subset \Lambda_{(k)}^*$  the set of multiplicative functions on  $\Lambda_{(k)}$  which are nonnegative on  $K$  and equal to 1 on  $s_{(1)}$ . So a function  $f$  belongs to  $\text{Mult}^+(\Lambda_{(k)})$  when  $f : \Lambda_{(k)} \rightarrow \mathbb{R}$  is linear and satisfies  $f(UV) = f(U)f(V)$  for any  $U, V \in \Lambda_{(k)}$ . Note that  $i : \mathcal{B}_k \rightarrow \Lambda_{(k)}$  such that  $i(\lambda) = s_\lambda^{(k)}$  induces a map  $i^* : \Lambda_{(k)}^* \rightarrow F(\mathcal{B}_k, \mathbb{R})$ . Let  $K.K$  be the set of products of two elements in  $K$ . Since we have  $K.K \subset K$ , we get the following algebraic characterization of  $\partial\mathcal{H}^+(\mathcal{B}_k)$ .

**PROPOSITION 2.16.** *The map  $i^*$  yields an homeomorphism between  $\text{Mult}^+(\Lambda_{(k)})$  and  $\partial\mathcal{H}^+(\mathcal{B}_k)$ .*

Since  $i(\mathcal{B}_k)$  is a basis of  $\Lambda_{(k)}$ , this means that  $\partial\mathcal{H}(\mathcal{B}_k)$  is completely determined by the  $\mathbb{R}$ -algebra morphisms  $\varphi : \Lambda_{(k)} \rightarrow \mathbb{R}$  such that  $\varphi(s_{(1)}) = 1$  and  $\varphi(s_\lambda^{(k)}) \geq 0$  for any  $k$ -bounded partition  $\lambda$ . Each function  $f \in \partial\mathcal{H}^+(\mathcal{B}_k)$  can then be written  $f = \varphi \circ i$ .

By Corollary 2.11, the condition  $\varphi(s_\lambda^{(k)}) \geq 0$  for each  $k$ -bounded partition reduces in fact to test a finite number of  $k$ -Schur functions, namely  $\varphi(s_\lambda^{(k)}) \geq 0$  for each irreducible  $k$ -bounded partition (there are  $k!$  such partitions) and  $\varphi(s_{(k-a+1)^a}) \geq 0$  for any  $a = 1, \dots, k$ . We will see that the condition  $\varphi(s_\lambda^{(k)}) > 0$  for each  $k$ -bounded partition reduces in fact to test the positivity on the Schur functions associated to partitions with maximal hook-length less or equal to  $k$  (See Remark 7.11).

### 3. RESTRICTED GRAPH AND IRREDUCIBILITY

**3.1. THE MATRIX  $\Phi$ .** By Corollary 2.11, each morphism  $\varphi : \Lambda_{(k)} \rightarrow \mathbb{R}$  is uniquely determined by its values on the rectangle Schur functions  $s_{R_a}, 1 \leq a \leq k$  and on each  $s_{\tilde{\lambda}}^{(k)}$  where  $\tilde{\lambda}$  is an irreducible  $k$ -bounded partition. Set  $r_a = \varphi(s_{R_a}), a = 1, \dots, k$  and  $\vec{r} = (r_1, \dots, r_k)$ . Recall that  $\mathcal{P}_{\text{irr}}$  is the set of irreducible  $k$ -bounded partitions (including the empty partition). Then, for  $\lambda \in \mathcal{P}_{\text{irr}}$ ,

$$(2) \quad \varphi(s_\lambda^{(k)})\varphi(s_{(1)}) = \sum_{\lambda \rightarrow \mu} \varphi(s_\mu^{(k)}).$$

By Corollary 2.11, for each  $k$ -bounded partition  $\mu$  there exists a sequence  $\{p_1^\mu, p_2^\mu, \dots, p_k^\mu\}$  of elements in  $\{1, \dots, k\}$  and an irreducible partition  $\tilde{\mu}$  such that

$$(3) \quad s_\mu^{(k)} = \prod_{a=1}^k s_{R_a}^{p_a^\mu} s_{\tilde{\mu}}^{(k)} \text{ and thus } \varphi(s_\mu^{(k)}) = \prod_{a=1}^k r_a^{p_a^\mu} \varphi(s_{\tilde{\mu}}^{(k)}).$$

Hence by setting

$$\varphi_{\lambda\nu} = \sum_{\substack{\lambda \rightarrow \mu \\ \tilde{\mu} = \nu}} \prod_{1 \leq a \leq k} r_a^{p_a^\mu}$$

we get

$$\varphi(s_\lambda^{(k)}) = \sum_{\nu \in \mathcal{P}_{\text{irr}}} \varphi_{\lambda\nu} \varphi(s_\nu^{(k)}).$$

Let  $\Phi_{(r_1, \dots, r_k)} := (\varphi_{\nu\lambda})_{\lambda, \nu \in \mathcal{P}_{\text{irr}}}^{(3)}$  and define  $f \in \mathbb{R}^{\mathcal{P}_{\text{irr}}}$  as the vector  $(\varphi(s_\lambda^{(k)}))_{\lambda \in \mathcal{P}_{\text{irr}}}$ . When there is no risk of confusion, we simply write  $\Phi$  instead of  $\Phi_{(r_1, \dots, r_k)}$ . The vector  $f$  is a left eigenvector of  $\Phi$  for the eigenvalue  $\varphi(s_1)$  with positive entries having value 1 on  $\emptyset$  and  $\varphi(s_1)$  on  $s_1$ .

3.2. IRREDUCIBILITY OF THE MATRIX  $\Phi$ . Recall that a matrix  $M \in M_n(\mathbb{R})$  with nonnegative entries is irreducible if and only if for each  $1 \leq i, j \leq n$  there exists  $n \geq 1$  such that  $(M^n)_{ij} > 0$ .

PROPOSITION 3.1. Consider  $\vec{r} = (r_1, \dots, r_k) \in \mathbb{R}_{\geq 0}^k$ . Then, the matrices  $\Phi_{(r_1, \dots, r_k)}$  and  $\Phi_{(r_1, \dots, r_k)}^t$  associated to  $\varphi$  are irreducible if and only if for all  $1 \leq a \leq k - 1$ ,  $r_a$  or  $r_{a+1}$  is positive.

We will prove in fact that  $\Phi^t$  is irreducible. Let  $G$  be the graph with set of vertices  $\mathcal{P}_{\text{irr}}$  and a directed edge from  $\lambda$  to  $\nu$  if and only if  $\Phi_{\lambda\nu} \neq 0$ . The matrix  $\Phi^t$  is irreducible if and only if  $G$  is strongly connected, which means that there is a (directed) path from any vertex to any other vertex of the graph. We prove Proposition 3.1 by showing that  $G$  is strongly connected. Let us first establish a preliminary lemma. We say that  $\lambda \in \mathcal{P}_{\text{irr}}$  is 1-saturated when it contains less than  $k - 1$  parts equal to 1. More generally, for  $i \geq 2$  the partition  $\lambda \in \mathcal{P}_{\text{irr}}$  is  $i$ -saturated when we have

$$\lambda = (\dots, (i-1)^{k-i+1}, \dots, 2^{k-2}, 1^{k-1}) \text{ and } \lambda \neq (\dots, i^{k-i}, (i-1)^{k-i+1}, \dots, 2^{k-2}, 1^{k-1}).$$

Denote by  $\lambda^1$  the irreducible  $k$ -bounded partition  $((k-1)^1, (k-2)^2, \dots, 1^{k-1})$ . Observe that  $\lambda \in \mathcal{P}_{\text{irr}}$  is  $k$ -saturated if and only if  $\lambda = \lambda^1$ .

LEMMA 3.2. Any vertex  $\lambda$  of  $G$  is connected to  $\lambda^1$ .

*Proof.* We get a path between  $\lambda$  and  $\lambda^1$  from the following observations.

1: If  $\lambda$  is  $i$ -saturated, we claim that  $\lambda \rightarrow \lambda^{\uparrow i-1}$ , where  $\lambda^{\uparrow i-1}$  is the partition obtained by adding one box to the first row of size  $(i - 1)$  of  $\lambda$ . Moreover,  $\lambda^{\uparrow i-1}$  is then  $(i - 1)$ -saturated. To see this, consider the minimal integer  $r$  such that  $\lambda_r = i - 1$  and the chain  $c$  associated to  $\lambda_r$ . Since  $\lambda$  is  $i$ -saturated, a combinatorial computation shows that

$$c = \{\dots, \lambda_r, \lambda_{r+k-i+2}, \lambda_{r+(k-i+2)+(k-i+3)}, \dots, \lambda_m\} \text{ with } m = r + \sum_{s=0}^{i-1} (k - i + s).$$

Moreover, for  $0 \leq t \leq i - 1$ , the  $(t + 1)$ -th row in the chain  $c$  is  $\lambda_{r+\sum_{s=0}^t (k-i+s)}$  and has length  $i - 1 - t$ . In particular, each row following  $\lambda_r$  in the chain  $c$  is preceded by a row with the same length. Therefore, we can apply Lemma 2.8 to get the existence of an edge between  $\lambda$  and the partition  $\lambda^{\uparrow i-1}$  which is  $(i - 1)$ -saturated.

2: Suppose that  $\lambda$  is  $i$ -saturated. Applying successively the previous procedure on the partitions  $\lambda, \lambda^{\uparrow(i-1)}, (\lambda^{\uparrow(i-1)})^{\uparrow(i-2)}, \dots$  eventually yields a partition  $\nu$  which is irreducible,  $i$ -saturated, with one more row of length  $i$  than  $\lambda$  and such that there is a path between  $\lambda$  and  $\nu$  in  $G$ .

3: Suppose that  $\lambda$  has initially  $l \leq k - i - 1$  rows of size  $i$ . By repeating  $k - i - l$  times step 2, one gets a partition  $\kappa$  connected to  $\lambda$  in  $\Gamma$  which is  $(i + 1)$ -saturated.

4: Repeated applications of step 3 for  $i < l \leq k$  yields a path between  $\lambda$  and  $\lambda^1$  in  $G$ . □

We prove Proposition 3.1 by giving necessary and sufficient conditions to have a path in  $G$  between  $\lambda^1$  and  $\emptyset$ .

---

(3)Observe we have defined  $\Phi_{(r_1, \dots, r_k)}$  as the transpose of the matrix  $(\varphi_{\lambda,\mu})_{\lambda, \nu \in \mathcal{P}_{\text{irr}}}$  to make it compatible with the multiplication by  $s_{(1)}$  used in Section 4.

*Proof of Proposition 3.1.* Let us show that there is a path between  $\lambda^1$  and  $\emptyset$  if and only if for all  $1 \leq a \leq k - 1$ ,  $\varphi(s_{R_a})$  or  $\varphi(s_{R_{a+1}})$  is positive.

Assume first that for all  $1 \leq a \leq k - 1$ ,  $\varphi(s_{R_a})$  or  $\varphi(s_{R_{a+1}})$  is positive.

For  $1 \leq a \leq k - 1$ , let  $\lambda^a$  be the partition  $(k - 1, (k - 2)^2, \dots, a^{k-a})$ , and set  $\lambda^k = \emptyset$ . Let us prove that for  $1 \leq a \leq k - 1$ , there is a path in  $G$  from  $\lambda^a$  to  $\lambda^{a+1}$ . If  $\varphi(s_{R_a}) > 0$ , it suffices to add a part of length  $a$  at the end of  $\lambda^a$ , which is always possible. This gives a rectangle  $a^{k-a+1}$  which, once removed, yields  $\lambda^{a+1}$ . Assume now we have  $\varphi(s_{R_a}) = 0$  and thus  $\varphi(s_{R_{a+1}}) > 0$  by the hypothesis on  $\varphi$ . Let  $i$  be minimal such that  $\lambda_i^a = a$ , and let  $c$  be the chain containing  $\lambda_i^a$ . On the one hand, since  $\lambda_i^a = a$ , the part following  $\lambda_i^a$  in  $c$  is  $\lambda_{i+k-a+1}^a$ . On the other hand, by definition of  $\lambda^a$ , we have  $\lambda_{i+(k-a)}^a = \lambda_{i+(k-a)+1}^a = 0$ . Thus, by Lemma 2.8, we can add a box on the part  $\lambda_i^a$ , which makes appear a block  $(a + 1)^{k-a+1}$ . Since  $\varphi(s_{R_{a+1}}) > 0$  we so get an arrow in  $G$  between  $\lambda^a$  and the partition  $(\lambda^{a-2}, \lambda_{i+1}^a, \dots, \lambda_{i+(k-a)-1}^a)$ . Similarly, we can successively add a box to the parts  $\lambda_{i+1}^a, \dots, \lambda_{i+(k-a)-1}^a$  (all equal to  $a$ ) and get a path between  $(\lambda^{a-2}, \lambda_{i+1}^a, \dots, \lambda_{i+(k-a)-1}^a)$  and  $\lambda^{a+1}$ . We so obtain a path in  $G$  from  $\lambda^a$  to  $\lambda^{a+1}$  for all  $1 \leq a \leq k - 1$  and thus a path from  $\lambda^1$  to  $\lambda^k = \emptyset$ .

Assume now that there exists  $1 \leq a \leq k - 1$  such that  $\varphi(s_{R_a}) = \varphi(s_{R_{a+1}}) = 0$ .

Let  $\gamma = (\mu^1, \dots, \mu^r)$  be a path in  $G$  starting at  $\mu^1 = a^{k-a}$ , and denote by  $x_i$  and  $y_i$  the number of parts in  $\mu^i$  equal to  $a + 1$  and  $a$ , respectively. Since  $\gamma$  is a path in  $G$ , for all  $1 \leq i \leq r$ , we have  $x_i \leq k - a - 1$  and  $y_i \leq k - a$ . Let us prove by induction on  $1 \leq i \leq r$  that  $x_i + y_i \geq k - a$ .

This is certainly true for  $i = 1$ . Assume that  $i > 1$  and the result holds for  $i - 1$ . Since  $\varphi(s_{R_a}) = \varphi(s_{R_{a+1}}) = 0$ , the only way to get  $x_i + y_i < x_{i-1} + y_{i-1}$  is to add a box in the first part of length  $a + 1$  (if any) of  $\mu^{i-1}$ . So if we have  $x_{i-1} = 0$ , then  $x_i + y_i \geq x_{i-1} + y_{i-1} \geq k - a$ . Assume now that  $x_{i-1} > 0$ . Let  $l$  be minimal such that  $\mu_l^{i-1} = a + 1$  and let  $c$  be the chain containing  $\mu_l^{i-1}$ . The part following  $\mu_l^{i-1}$  in  $c$  is then equal to  $l + k - (a + 1) + 1 = l + (k - a)$ . Since  $x_{i-1} + y_{i-1} \geq k - a$  and  $x_{i-1} \leq k - a - 1$ , we have  $\mu_{l+(k-a)-1}^{i-1} = a$ . Thus, by Lemma 2.8, it is possible to add a box on the part  $l$  of  $\mu^{i-1}$  if and only if  $\mu_{l+k-a}^{i-1} = a$ . If so, we get in fact  $x_{i-1} + y_{i-1} \geq (l + k - a) - l + 1 \geq k - a + 1$  and  $x_i + y_i = x_{i-1} + y_{i-1} - 1$ . Therefore, in any cases,  $x_i + y_i \geq k - a$ . We have proved that for any path in  $G$  starting at  $a^{k-a}$ , the number of parts of length  $a$  or  $a + 1$  is at least  $k - a$ , thus there is no path between  $a^{k-a}$  and  $\emptyset$  in  $G$ .  $\square$

#### 4. FIELD EXTENSIONS AND $k$ -SCHUR FUNCTIONS

4.1. FIELD EXTENSIONS. Recall that  $\Lambda_{(k)} = \mathbb{R}[h_1, \dots, h_k]$ . Since  $h_1, \dots, h_k$  are algebraically independent over  $\mathbb{R}$ , we can consider the fraction field  $\mathbb{L} = \mathbb{R}(h_1, \dots, h_k)$ . Write  $\mathbb{A} = \mathbb{R}[s_{R_1}, \dots, s_{R_k}]$  the subalgebra of  $\Lambda_{(k)}$  generated by the rectangle Schur functions  $s_{R_a}, a = 1, \dots, k$ . In order to introduce the fraction field of  $\mathbb{A}$ , we first need to check that  $s_{R_1}, \dots, s_{R_k}$  are algebraically independent over  $\mathbb{R}$ . We shall use a proposition giving a sufficient condition on a family of polynomials to be algebraically independent.

Let  $k$  be a field and  $k[T_1, \dots, T_m]$  the ring of polynomials in  $T_1, \dots, T_m$  over  $k$ . For any  $\beta \in \mathbb{Z}_{\geq 0}^m$ , we set  $T^\beta = T_1^{\beta_1} \dots T_m^{\beta_m}$ . We also consider a total order  $\preceq$  on the monomials of  $k[T_1, \dots, T_m]$  given by the lexicographical order on the exponents. Namely,  $T^\beta \succeq T^{\beta'}$  if and only if  $\beta_i > \beta'_i$  on the first index on which  $\beta$  and  $\beta'$  differ, if any. The leading monomial  $\text{lm}(P)$  of a polynomial  $P \in k[T_1, \dots, T_m]$  is the monomial appearing in the support of  $P$  (that is, with a nonzero coefficient) maximal under the total order  $\preceq$ .

PROPOSITION 4.1 (See [15, Lemma 4.2.10], [5, Proposition 6.6.11]).

- (1) The monomials  $T^{\beta^{(1)}}, \dots, T^{\beta^{(p)}}$  are algebraically independent if and only if  $\beta^{(1)}, \dots, \beta^{(p)}$  are linearly independent over  $\mathbb{Z}$ .
- (2) Consider  $P_1, \dots, P_l$  polynomials in  $k[T_1, \dots, T_m]$  such that  $\text{lm}(P_1), \dots, \text{lm}(P_l)$  are algebraically independent, then  $P_1, \dots, P_l$  are algebraically independent.

We also refer to [18, Section 3] for a detailed proof of this proposition. With Proposition 4.1 in hand, it is then easy to check that  $s_{R_1}, \dots, s_{R_k}$  are algebraically independent over  $\mathbb{R}$ . Recall that each Schur function  $s_\lambda$  with indeterminate set  $X = \{X_1, X_2 \dots\}$  decomposes on the form

$$s_\lambda = X^\lambda + \sum_{\mu < \lambda} K_{\lambda, \mu} X^\mu$$

where  $\leq$  is the dominant order over finite sequences of integers, that is,  $\beta < \beta'$  when  $\beta' - \beta$  decomposes as a sum of  $\varepsilon_i - \varepsilon_j, i < j$  with nonnegative integer coefficients. Since the lexicographical order refines the dominance order, by Assertion (1) of the previous proposition, the monomials  $X^{R_1}, \dots, X^{R_k}$  are algebraically independent since the rectangle partitions  $R_a, a = 1, \dots, k$  are linearly independent over  $\mathbb{Z}$ . Assertion (2) then implies that  $s_{R_1}, \dots, s_{R_k}$  are algebraically independent over  $\mathbb{R}$ . We denote by  $\mathbb{K} = \mathbb{R}(s_{R_1}, \dots, s_{R_k})$  the fraction field of the algebra  $\mathbb{A}$ .

PROPOSITION 4.2.

- (1) Each  $h_1, \dots, h_k$  is algebraic over  $\mathbb{K}$ .
- (2) We have  $\mathbb{L} = \mathbb{R}(h_1, \dots, h_k) = \mathbb{K}[h_1, \dots, h_k]$ .
- (3)  $\mathbb{L}$  is an algebraic extension of  $\mathbb{K}$ .
- (4) The field  $\mathbb{L}$  is a finite extension of  $\mathbb{K}$  with degree  $[\mathbb{L} : \mathbb{K}] = k!$  and the set  $\mathcal{I} = \{s_\kappa^{(k)} \mid \kappa \in \mathcal{P}_{\text{irr}}\}$  is a basis of  $\mathbb{L}$  over  $\mathbb{K}$ .
- (5)  $\Lambda_{(k)}$  is an integral extension of  $\mathbb{A}$ .

*Proof.* (1): For any  $a = 1, \dots, k$ , consider the evaluation morphism  $\theta_a : \mathbb{K}[T] \rightarrow \mathbb{L}$  which associates to any  $P \in \mathbb{K}[T]$ , the polynomial  $P(h_a) \in \Lambda_{(k)} = \mathbb{R}(h_1, \dots, h_k)$ . We know that  $\{s_\lambda^{(k)} \mid \lambda \in \mathcal{B}_k\}$  is a basis of  $\Lambda_{(k)}$  over  $\mathbb{R}$  thus each power  $h_a^i, i \in \mathbb{Z}_{\geq 0}$  decomposes on the basis of  $k$ -Schur functions with real coefficients. By Corollary 2.11,  $h_a^i$  then decomposes on the family  $\mathcal{I}$  with coefficients in  $\mathbb{K}$ . Thus,  $P(h_a)$  also decomposes on the family  $\mathcal{I}$  with coefficients in  $\mathbb{K}$ . Since  $\mathcal{I}$  is a finite set, this shows that  $\text{Im}(\theta_a)$  is a finite-dimensional  $\mathbb{K}$ -subspace of  $\mathbb{L}$ , thus  $h_a$  is algebraic over  $\mathbb{K}$ .

(2): Since  $h_1, \dots, h_k$  are algebraic over  $\mathbb{K}$ , we get  $\mathbb{K}[h_1, \dots, h_k] = \mathbb{K}(h_1, \dots, h_k) \subset \mathbb{L}$ . We also have  $\mathbb{L} = \mathbb{R}(h_1, \dots, h_k) \subset \mathbb{K}(h_1, \dots, h_k)$  since  $\mathbb{K}$  is an extension of  $\mathbb{R}$ . Thus,  $\mathbb{L} = \mathbb{K}[h_1, \dots, h_k]$ .

(3): This easily follows from (1) and (2).

(4): By using the same arguments as in the proof of (1), we get that each element  $Q(h_1, \dots, h_k)$  with  $Q \in \mathbb{K}[T_1, \dots, T_k]$  decomposes on the family  $\mathcal{I}$  with coefficients in  $\mathbb{K}$ . Assume we have

$$\sum_{\kappa | k\text{-irreducible}} c_\kappa s_\kappa^{(k)} = 0$$

with  $c_\kappa \in \mathbb{K} = \mathbb{R}(s_{R_1}, \dots, s_{R_k})$  for any  $k$ -irreducible partition  $\kappa$ . Up to multiplication, we can assume these coefficients belong in fact to  $\mathbb{R}[s_{R_1}, \dots, s_{R_k}]$ . Set

$$c_\kappa = \sum_{\beta \in \mathbb{Z}_{\geq 0}^k} a_\beta^{(\kappa)} s_{R_1}^{\beta_1} \cdots s_{R_k}^{\beta_k}$$

where all the coefficients  $a_\beta^{(\kappa)}$  are equal to 0 up to a finite number (in which case  $a_\beta^{(\kappa)}$  is real). We get

$$(4) \quad \sum_{\kappa|k\text{-irreducible}} \sum_{\beta \in \mathbb{Z}_{\geq 0}^k} a_\beta^{(\kappa)} s_{R_1}^{\beta_1} \cdots s_{R_k}^{\beta_k} s_\kappa^{(k)} = 0.$$

By Remark 2.12, there is a bijection between the set of  $k$ -bounded partitions and that of pairs  $(\beta, \kappa)$  with  $\kappa$   $k$ -irreducible and  $\beta \in \mathbb{Z}_{\geq 0}^k$ . So equation (4) gives in fact a linear combination of  $k$ -Schur functions over  $\mathbb{R}$  equal to 0. Since we know that the set of  $k$ -Schur functions is a basis of  $\Lambda_{(k)}$ , this imposes that each coefficient  $a_\beta^{(\kappa)}$  is in fact equal to 0. So the family  $\mathcal{I}$  is a  $\mathbb{K}$ -basis of  $\mathbb{L}$  and we have  $[\mathbb{L} : \mathbb{K}] = \text{card}(\mathcal{I}) = k!$ .

(5): The characteristic polynomial of each  $h_a, a = 1, \dots, k$  belongs to  $\mathbb{A}[T]$  because the multiplication by  $h_a$  on the basis  $\mathcal{I}$  makes only appear coefficients in  $\mathbb{A}$ . Thus, each  $h_a$  is an integral element of  $\Lambda_{(k)} = \mathbb{A}[h_1, \dots, h_k]$  over  $\mathbb{A}$ .  $\square$

4.2. PRIMITIVE ELEMENT. By Proposition 4.2,  $s_1 = h_1$  is algebraic over  $\mathbb{K}$ . Denote by  $\Pi$  its minimal polynomial. Observe that  $\Pi$  is an irreducible polynomial of  $\mathbb{K}[T]$ . Also write  $\Phi$  for the matrix of the multiplication by  $s_1$  in  $\mathbb{L}$  in the basis  $\mathcal{I} = \{s_\kappa^{(k)} \mid \kappa \in \mathcal{P}_{\text{irr}}\}$  (here, we assume we have fixed once and for all a total order on the set  $\mathcal{P}_{\text{irr}}$  of  $k$ -irreducible partitions). Let  $\Xi(T) = \det(TI_{k!} - \Phi)$  be the characteristic polynomial of the matrix  $\Phi$ . We thus have that  $\Pi$  divides  $\Xi$ . Moreover both polynomials belong to  $\mathbb{A}[T]$  since the entries of the matrix  $\Phi$  are in the ring  $\mathbb{A}$ . We have in fact the following stronger proposition.

PROPOSITION 4.3.

- (1) *The invariant factors of the multiplication by  $s_1$  are all equal to  $\Pi$ : there exists an integer  $m$  such that  $\Xi = \Pi^m$ .*
- (2) *The coefficients of  $\Pi$  and  $\Xi$  are invariant under the flips of  $s_{R_a}$  and  $s_{R_{k-a+1}}$  for any  $a = 1, \dots, \lfloor \frac{k}{2} \rfloor$ .*

*Proof.* For (1), write  $P_1, \dots, P_m$  for the invariant factors of  $\Phi$ . We must have  $P_1/P_2/\dots/P_m, P_m = \Pi$  and  $P_1P_2 \cdots P_m = \Xi$ . Since  $\Pi$  is irreducible, this imposes  $P_1 = \dots = P_m = \Pi$  which gives the assertion.

For (2), we apply  $\omega_k$  to each equality  $\Pi(s_{(1)}) = 0$  and  $\Xi(s_{(1)}) = 0$ .  $\square$

EXAMPLE 4.4. For  $k = 3$ , we get by listing the  $k$ -bounded partitions as  $\emptyset, (1), (2), (1, 1), (2, 1)$  and  $(2, 1, 1)$

$$\Phi = \begin{pmatrix} 0 & 0 & s_{R_1} & s_{R_3} & s_{R_2} & 0 \\ 1 & 0 & 0 & 0 & 0 & s_{R_2} \\ 0 & 1 & 0 & 0 & 0 & s_{R_3} \\ 0 & 1 & 0 & 0 & 0 & s_{R_1} \\ 0 & 0 & 1 & 1 & 0 & 0 \\ 0 & 0 & 0 & 0 & 1 & 0 \end{pmatrix}$$

This gives  $\Xi(T) = T^6 - 2(s_{R_1} + s_{R_3})T^3 - 4s_{R_2}T^2 + (s_{R_1} - s_{R_3})^2$ . Observe the symmetry of  $\Phi$  which will be elucidated in § 6.3.

In Proposition 4.3, we have just used that  $\Phi$  is the matrix of the multiplication by  $s_{(1)}$  which is algebraic over  $\mathbb{K}$ . Given any morphism  $\tilde{\varphi} : \mathbb{A} \rightarrow \mathbb{R}$  such that  $\tilde{\varphi}(s_{R_a}) \geq 0$  for any  $a = 1, \dots, k$ , the matrix  $\tilde{\varphi}(\Phi)$  obtained by replacing in  $\Phi$  each rectangle Schur function  $s_{R_a}$  by  $\tilde{\varphi}(s_{R_a})$  coincides with the matrix  $\Phi$  defined in § 3.1. Thus  $\Phi = \tilde{\varphi}(\Phi)$  has nonnegative entries. We can now state the main theorem of this section.

THEOREM 4.5. *We have  $\mathbb{L} = \mathbb{K}(s_{(1)})$ , that is  $s_{(1)}$  is a primitive element for  $\mathbb{L}$  regarded as an extension of  $\mathbb{K}$ .*

*Proof.* It suffices to show that  $\Pi = \Xi$ . By Proposition 4.3, we already know that  $\Xi = \Pi^m$  with  $m \in \mathbb{Z}_{>0}$ . Then by Frobenius reduction, there exists an invertible matrix  $P$  with entries in  $\mathbb{K}$  such that

$$(5) \quad \Phi = P \begin{pmatrix} \mathcal{C}_\Pi & \mathbf{0} & \mathbf{0} \\ \mathbf{0} & \ddots & \mathbf{0} \\ \mathbf{0} & \mathbf{0} & \mathcal{C}_\Pi \end{pmatrix} P^{-1},$$

that is, the matrix  $\Phi$  is equivalent to a block diagonal matrix with  $k$  blocks equal to  $\mathcal{C}_\Pi$  the companion matrix of the polynomial  $\Pi$ . By multiplying the columns of the matrix  $P$  by elements of  $\mathbb{A}$ , one can also assume that the entries of  $P$  belong to  $\mathbb{A}$ . Then we can write  $P^{-1} = \frac{1}{\det(P)}Q$  where  $Q$  has also entries in  $\mathbb{A}$  and  $\det(P) \in \mathbb{A}$  is nonzero. Since  $\det(P) \in \mathbb{A} = \mathbb{R}[s_{R_1}, \dots, s_{R_k}]$  is nonzero, there exists a nonzero polynomial  $F \in \mathbb{R}[T_1, \dots, T_k]$  such that  $\det(P) = F(s_{R_1}, \dots, s_{R_k})$ . Also a morphism  $\tilde{\varphi} : \mathbb{A} \rightarrow \mathbb{R}$  such that  $\tilde{\varphi}(s_{R_a}) \geq 0$  for any  $a = 1, \dots, k$  is characterized by the datum of the  $\tilde{\varphi}(s_{R_a})$ 's. The polynomial  $F$  being nonzero, one can find  $(r_1, \dots, r_k) \in \mathbb{R}_{>0}^k$  such that  $F(r_1, \dots, r_k) \neq 0$ . For such a  $k$ -tuple, let us define  $\tilde{\varphi}$  by setting  $\tilde{\varphi}(s_{R_a}) = r_a$ . Then  $\tilde{\varphi}(\det(P)) \neq 0$  and we can apply  $\tilde{\varphi}$  to (5) which gives

$$\Phi = \tilde{\varphi}(P) \begin{pmatrix} \mathcal{C}_{\tilde{\varphi}(\Pi)} & \mathbf{0} & \mathbf{0} \\ \mathbf{0} & \ddots & \mathbf{0} \\ \mathbf{0} & \mathbf{0} & \mathcal{C}_{\tilde{\varphi}(\Pi)} \end{pmatrix} \tilde{\varphi}(P)^{-1}.$$

The matrix  $\Phi$  has nonnegative entries and is irreducible by Lemma 3.1. So, by the Perron–Frobenius theorem, it admits a unique eigenvalue  $t > 0$  of maximal modulus and the corresponding eigenspace is one-dimensional. This eigenvalue  $t$  should also be a root of  $\tilde{\varphi}(\Pi)$ , thus there is a vector  $v \in \mathbb{R}^d$  with  $d = \deg(\Pi)$  such that  $\mathcal{C}_{\tilde{\varphi}(\Pi)}v = tv$ . Then we get  $m$  right eigenvectors of  $\Phi$  linearly independent on  $\mathbb{R}^{dm}$

$$\begin{pmatrix} v \\ \mathbf{0} \\ \vdots \\ \mathbf{0} \end{pmatrix}, \begin{pmatrix} \mathbf{0} \\ v \\ \vdots \\ \mathbf{0} \end{pmatrix}, \dots, \begin{pmatrix} \mathbf{0} \\ \mathbf{0} \\ \vdots \\ v \end{pmatrix}.$$

Since the eigenspace considered is one-dimensional, this means that  $m = 1$  and we are done.  $\square$

**COROLLARY 4.6.** *There exist  $\Delta \in \mathbb{A}$  and for each irreducible  $k$ -bounded partition  $\kappa$  a polynomial  $P_\kappa \in \mathbb{A}[T]$  such that*

$$s_\kappa^{(k)} = \frac{1}{\Delta} P_\kappa(s_{(1)}).$$

*In particular, for any morphism  $\varphi : \Lambda_{(k)} \rightarrow \mathbb{R}$  such that  $\varphi(\Delta) \neq 0$  we have*

$$\varphi(s_\kappa^{(k)}) = \frac{1}{\varphi(\Delta)} \varphi(P_\kappa)(\varphi(s_{(1)})).$$

*Proof.* Since  $s_{(1)}$  is a primitive element for  $\mathbb{L}$  regarded as an extension of  $\mathbb{K}$ ,  $\{1, s_{(1)}, \dots, s_{(1)}^{k!-1}\}$  is a  $\mathbb{K}$ -basis of  $\mathbb{L}$ . It then suffices to consider the matrix  $M$  whose columns are the vectors  $s_{(1)}^i, i = 0, \dots, k! - 1$  expressed on the basis  $\mathcal{I} = \{s_\kappa^{(k)}, \kappa \in \mathcal{P}_{\text{irr}}\}$ . Its inverse can be written  $M^{-1} = \frac{1}{\det M}N$  where the entries of  $N$  belong to  $\mathbb{A}$ . So we have  $\Delta = \det(M)$  and the entries on each columns of the matrix  $N$  give the polynomials  $P_\kappa, \kappa \in \mathcal{P}_{\text{irr}}$ .  $\square$

REMARK 4.7. In fact we get the equality of  $\mathbb{A}$ -modules  $\Lambda_{(k)} = \frac{1}{\Delta} \mathbb{A}[s_1]$ . In particular, the polynomial  $\Delta$  (once assumed monic) only depends on  $\Lambda_{(k)}$  and  $\mathbb{A}[s_1]$  and not on the choice of the bases considered in these  $\mathbb{A}$ -modules. Indeed a basis change will multiply  $\Delta$  by an invertible element in  $\mathbb{A}$ , that is by a nonzero real.

EXAMPLE 4.8. For  $k = 2$  we get

$$\Phi = \begin{pmatrix} 0 & s_{R_1} + s_{R_2} \\ 1 & 0 \end{pmatrix} \text{ and } M = I_2.$$

EXAMPLE 4.9. For  $k = 3$  and with the same convention as in Example 4.4, we get

$$M = \begin{pmatrix} 1 & 0 & 0 & s_{R_1} + s_{R_3} & 2s_{R_2} & 0 \\ 0 & 1 & 0 & 0 & s_{R_1} + s_{R_3} & 4s_{R_2} \\ 0 & 0 & 1 & 0 & 0 & s_{R_1} + 3s_{R_3} \\ 0 & 0 & 1 & 0 & 0 & 3s_{R_1} + s_{R_3} \\ 0 & 0 & 0 & 2 & 0 & 0 \\ 0 & 0 & 0 & 0 & 2 & 0 \end{pmatrix}$$

and

$$M^{-1} = \begin{pmatrix} 1 & 0 & 0 & -\frac{s_{R_1} + s_{R_3}}{2} & -\frac{s_{R_2}}{2} \\ 0 & 1 & \frac{2s_{R_2}}{s_{R_1} - s_{R_3}} & 0 & -\frac{s_{R_1} + s_{R_3}}{2} \\ 0 & 0 & \frac{3s_{R_1} + s_{R_3}}{2s_{R_1} - 2s_{R_3}} & 0 & 0 \\ 0 & 0 & \frac{s_{R_3} - s_{R_1}}{2s_{R_3} - 2s_{R_1}} & \frac{1}{2} & 0 \\ 0 & 0 & 0 & 0 & \frac{1}{2} \\ 0 & 0 & \frac{-1}{2s_{R_1} - 2s_{R_3}} & 0 & 0 \end{pmatrix}$$

So in particular,  $s_{(2,1,1)}^{(3)} = \frac{1}{2}s_{(1)}^4 - \frac{1}{2}(s_{R_1} + s_{R_3})s_{(1)} - s_{R_2}$ .

4.3. ALGEBRAIC VARIETY ASSOCIATED TO FIXED VALUES OF RECTANGLES. Recall that  $\Lambda_{(k)} = \mathbb{R}[h_1, \dots, h_k]$  and each rectangle Schur polynomial can be written  $s_{R_a} = JT_a(h_1, \dots, h_k)$  for any  $a = 1, \dots, k$  where  $JT_a \in \mathbb{R}[h_1, \dots, h_k]$  is given by the Jacobi-Trudi determinantal formula. Consider  $\vec{r} = (r_1, \dots, r_k) \in \mathbb{R}_{\geq 0}^k$ .

DEFINITION 4.10. Let  $\mathcal{R}_{\vec{r}}$  be the algebraic variety of  $\mathbb{R}^k$  defined by the equations  $s_{R_a} = r_a$  for any  $a = 1, \dots, k$ .

We can consider the algebra  $\bar{\Lambda}_{(k)} := \Lambda_{(k)}/J$  where  $J$  is the ideal generated by the relations  $s_{R_a} = r_a$  for any  $a = 1, \dots, k$ . Write  $\bar{\varphi} : \Lambda_{(k)} \rightarrow \Lambda_{(k)}/J$  for the canonical projection obtained by specializing in  $\Lambda_{(k)}$  each rectangle Schur function  $s_{R_a}$  to  $r_a$ . We shall write for short  $\bar{b} = \bar{\varphi}(b)$  for any  $b \in \Lambda_{(k)}$ . Clearly  $\bar{\Lambda}_{(k)} = \Lambda_{(k)}/J$  is a finite-dimensional  $\mathbb{R}$ -algebra and  $\bar{\Lambda}_{(k)} = \text{vect}(\bar{s}_{\kappa} \mid \kappa \text{ irreducible})$ . The following proposition shows that the non-cancellation of  $\Delta$  can be naturally interpreted as a condition for the multiplication by  $\bar{s}_1$  to be a cyclic morphism in  $\bar{\Lambda}_{(k)}$ .

PROPOSITION 4.11.

- (1) The algebra  $\bar{\Lambda}_{(k)}$  has dimension  $k!$  over  $\mathbb{R}$  and  $\{\bar{s}_{\kappa} \mid \kappa \in \mathcal{P}_{\text{irr}}\}$  is a basis of  $\bar{\Lambda}_{(k)}$ .
- (2) We have  $\bar{\Lambda}_{(k)} = \mathbb{R}[\bar{s}_1]$  if and only if  $\bar{\Delta} \neq 0$ .

*Proof.* (1): For any  $k$ -bounded partition  $\lambda$ , write  $\lambda = R_1^{m_1} \sqcup \dots \sqcup R_k^{m_k} \sqcup \kappa(\lambda)$  for its decomposition into rectangles and irreducible partition, and set  $u(\lambda) = r_1^{m_1} \dots r_k^{m_k}$ . If all  $m_i$  are equal to zero for  $1 \leq i \leq k$ , we set  $u(\lambda) = 0$ . Let us prove that  $J$  regarded as a  $\mathbb{R}$ -vector space has basis  $\{s_{\lambda}^{(k)} - u(\lambda)s_{\kappa(\lambda)}^{(k)} \mid \lambda \in \mathcal{B}_k \setminus \mathcal{P}_{\text{irr}}\}$ . First, the latter set

is linearly independent and is thus a basis of a vector subspace  $V \subset \Lambda_{(k)}$ . It remains to prove that  $V = J$ .

Let  $\lambda = R_1^{m_1} \sqcup \dots \sqcup R_k^{m_k} \sqcup \kappa(\lambda)$  be a reducible  $k$ -bounded partition and let  $\kappa'$  be a  $k$ -bounded partition. Then,

$$\begin{aligned} s_{\kappa'}^{(k)}(s_{\lambda}^{(k)} - u(\lambda)s_{\kappa(\lambda)}^{(k)}) &= s_{\kappa'}^{(k)}s_{\kappa(\lambda)}^{(k)} \left( s_{R_1^{m_1} \sqcup \dots \sqcup R_k^{m_k}}^{(k)} - u(R_1^{m_1} \sqcup \dots \sqcup R_k^{m_k}) \right) \\ &= \sum_{\nu \in \mathcal{B}_k} c_{\kappa(\lambda), \kappa'}^{\nu(k)} s_{\nu}^{(k)} \left( s_{R_1^{m_1} \sqcup \dots \sqcup R_k^{m_k}}^{(k)} - u(R_1^{m_1} \sqcup \dots \sqcup R_k^{m_k}) \right) \end{aligned}$$

Let us write  $\lambda' = R_1^{m_1} \sqcup \dots \sqcup R_k^{m_k}$ . For each  $\nu \in \mathcal{B}_k$  written  $\nu = R_1^{n_1} \sqcup \dots \sqcup R_k^{n_k} \sqcup \kappa(\nu) := \nu' \sqcup \kappa(\nu)$ , we have

$$\begin{aligned} s_{\nu}^{(k)}(s_{\lambda'}^{(k)} - u(\lambda')) &= s_{\kappa(\nu)}^{(k)}(s_{\lambda' \sqcup \nu'}^{(k)} - u(\lambda')s_{\nu'}^{(k)}) \\ &= s_{\kappa(\nu)}^{(k)} \left( s_{\lambda' \sqcup \nu'}^{(k)} - u(\lambda' \sqcup \nu') + u(\lambda' \sqcup \nu') - u(\lambda')s_{\nu'}^{(k)} \right) \\ &= s_{\kappa(\nu)}^{(k)} \left( s_{\lambda' \sqcup \nu'}^{(k)} - u(\lambda' \sqcup \nu') - u(\lambda')(s_{\nu'}^{(k)} - u(\nu')) \right) \\ &= s_{\lambda' \sqcup \nu' \sqcup \kappa(\nu)}^{(k)} - u(\lambda' \sqcup \nu' \sqcup \kappa(\nu))s_{\kappa(\nu)}^{(k)} - u(\lambda')(s_{\nu'}^{(k)} - u(\nu)s_{\kappa(\nu)}^{(k)}) \in V, \end{aligned}$$

where we have used  $u(\lambda' \sqcup \nu') = u(\lambda' \sqcup \nu' \sqcup \kappa(\nu))$  on the last equality. Hence,  $s_{\kappa'}^{(k)}(s_{\lambda}^{(k)} - u(\lambda)s_{\kappa(\lambda)}^{(k)}) \in V$  and  $V$  is an ideal of  $\Lambda_{(k)}$ . Since all generators  $s_{R_a} - r_a$  of  $J$  are in  $V$ , we have in particular  $J \subset V$ .

Let us show that  $(s_{\lambda}^{(k)} - u(\lambda)s_{\kappa(\lambda)}^{(k)}) \in J$  for all reducible  $k$ -bounded partitions  $\lambda = R_1^{m_1} \sqcup \dots \sqcup R_k^{m_k} \sqcup \kappa(\lambda)$ . Since  $(s_{\lambda}^{(k)} - u(\lambda)s_{\kappa(\lambda)}^{(k)}) = s_{\kappa(\lambda)}^{(k)}(s_{R_1^{m_1} \sqcup \dots \sqcup R_k^{m_k}}^{(k)} - u(R_1^{m_1} \sqcup \dots \sqcup R_k^{m_k}))$ , we just have to show that  $s_{R_1^{m_1} \sqcup \dots \sqcup R_k^{m_k}}^{(k)} - u(R_1^{m_1} \sqcup \dots \sqcup R_k^{m_k}) \in J$  for all tuple  $\vec{m} = (m_1, \dots, m_k)$  different from zero. We prove this by induction on  $l(\vec{m}) = \sum_i m_i$ . For  $\vec{m}$  such that  $l(\vec{m}) = 1$ , this is true. Suppose that  $\vec{m}$  is such that  $l(\vec{m}) > 1$  and assume without loss of generality that  $m_1 \geq 1$ . Then,

$$\begin{aligned} s_{R_1^{m_1} \sqcup \dots \sqcup R_k^{m_k}}^{(k)} - u(R_1^{m_1} \sqcup \dots \sqcup R_k^{m_k}) &= s_{R_1}(s_{R_1^{m_1-1} \sqcup \dots \sqcup R_k^{m_k}}^{(k)} - u(R_1^{m_1-1} \sqcup \dots \sqcup R_k^{m_k})) \\ &\quad + u(R_1^{m_1-1} \sqcup \dots \sqcup R_k^{m_k})(s_{R_1} - u(R_1)) \in J, \end{aligned}$$

where we have used the induction hypothesis to prove that the first term of the right hand side is in  $J$ . Hence,  $V \subset J$ , and finally  $V = J$ .

Observe also that  $\{s_{\lambda}^{(k)} - u(\lambda)s_{\kappa(\lambda)}^{(k)} \mid \lambda \text{ } k\text{-bounded partition}\}$  is a basis of  $\Lambda_{(k)}$ , since it is a triangular change of basis from the standard basis  $\{s_{\lambda}^{(k)} \mid \lambda \text{ } k\text{-bounded partition}\}$ . Hence, we have a decomposition

$$\Lambda_{(k)} = \text{vect}\langle s_{\lambda}^{(k)} - u(\lambda)s_{\kappa(\lambda)}^{(k)} \mid \lambda \in \mathcal{P}_{\text{irr}} \rangle \oplus J.$$

We deduced that a basis of  $\Lambda_{(k)}/J$  is given by  $\{\bar{\varphi}(s_{\lambda}^{(k)} - u(\lambda)s_{\kappa(\lambda)}^{(k)}) \mid \lambda \in \mathcal{P}_{\text{irr}}\}$ . Since  $u(\lambda) = 0$  and  $\lambda = \kappa(\lambda)$  when  $\lambda$  is irreducible, we get that  $\{\bar{s}_{\kappa} \mid \kappa \in \mathcal{P}_{\text{irr}}\}$  is a basis of  $\Lambda_{(k)}/J$ .

(2): We have  $\bar{\Delta} \neq 0$  if and only if  $\{\bar{s}_1^r \mid 0 \leq r \leq k! - 1\}$  is a basis of  $\bar{\Lambda}_{(k)}$  since  $\{\bar{s}_{\kappa} \mid \mathcal{P}_{\text{irr}}\}$  is a basis of  $\bar{\Lambda}_{(k)}$  and  $\bar{\Delta}$  is then the determinant between the two bases.  $\square$

The following proposition is classical, we prove it for completion.

PROPOSITION 4.12. *The algebraic variety  $\mathcal{R}_{\vec{r}}$  is finite.*



*Proof.* It suffices to see that the algebraic variety  $\mathcal{R}_{\vec{r}}^{\mathbb{C}}$  of  $\mathbb{C}^k$  defined by the equations  $s_{R_a} = r_a$  for any  $a = 1, \dots, k$  is finite. We can decompose  $\mathcal{R}_{\vec{r}}^{\mathbb{C}} = V_1 \cup \dots \cup V_m$  into its irreducible components. To each such component  $V_j$  is associated a prime ideal  $J_j$  and we have  $J = J_1 \cap \dots \cap J_m$ . Therefore for any  $j = 1, \dots, m$ ,  $\mathbb{C}[h_1, \dots, h_k]/J_j$  is a finite-dimensional algebra (because  $\mathbb{C}[h_1, \dots, h_k]/J$  is) which is an integral domain. So  $\mathbb{C}[h_1, \dots, h_k]/J_j$  is in fact a field and  $J_j$  is maximal in  $\mathbb{C}[h_1, \dots, h_k]$ . By using Hilbert's Nullstellensatz, we obtain that each  $V_j$  reduces to a point, so  $\mathcal{R}_{\vec{r}}^{\mathbb{C}}$  is finite.  $\square$

### 5. NONNEGATIVE MORPHISMS ON $\Lambda_{(k)}$

5.1. NONNEGATIVE MORPHISMS WITH  $\Phi$  IRREDUCIBLE. We show now that when the matrix  $\Phi$  introduced in § 3.1 is irreducible, the values of  $\varphi$  on the rectangle Schur functions  $s_{R_a}$ ,  $1 \leq a \leq k$  determine completely the morphism  $\varphi$ . Recall we have denoted by  $\mathbb{A} = \mathbb{R}[s_{R_1}, \dots, s_{R_k}]$  the subalgebra of  $\Lambda_{(k)} = \mathbb{R}[h_1, \dots, h_k]$  generated by the  $k$ -rectangle Schur functions. Also we have  $\mathcal{I} = \{s_{\kappa}^{(k)} \mid \kappa \in \mathcal{P}_{\text{irr}}\}$ . Set  $\mathcal{R} = \{s_{R_a}\}_{1 \leq a \leq k}$ .

**THEOREM 5.1.**

- (1) *Let  $\varphi : \mathbb{A} \rightarrow \mathbb{R}$  be a morphism, nonnegative on  $\mathcal{R}$  and such that its associated matrix  $\Phi$  is irreducible. Then there exists a unique morphism  $\tilde{\varphi} : \Lambda_{(k)} \rightarrow \mathbb{R}_{\geq 0}$  extending  $\varphi$ , nonnegative on the  $k$ -Schur functions and positive on  $\mathcal{I}$ .*
- (2) *A positive morphism  $\varphi : \Lambda_{(k)} \rightarrow \mathbb{R}$  is uniquely determined by its values on  $\mathcal{R}$ .*

*Proof.* (1): Let us prove the existence of  $\tilde{\varphi}$ . Set  $(r_1, \dots, r_k) = (\varphi(s_{R_1}), \dots, \varphi(s_{R_k}))$ , and assume first that  $\Delta(r_1, \dots, r_k) \neq 0$  where  $\Delta$  is the polynomial defined in Corollary 4.6. We have to show that there exists a morphism  $\tilde{\varphi}$  on  $\Lambda_{(k)}$  such that  $\tilde{\varphi}$  is positive on  $\mathcal{I}$  and  $\tilde{\varphi}(s_{R_a}) = r_a$  for  $a = 1, \dots, k$ . The set of morphisms from  $\Lambda_{(k)}$  to  $\mathbb{R}$  which takes values  $r_a$  on  $s_{R_a}$  for  $a = 1 \dots k$  is in bijection with the set of morphisms from  $\bar{\Lambda}_{(k)}$  to  $\mathbb{R}$ . Here recall that  $\bar{\Lambda}_{(k)} = \Lambda_{(k)}/J$  with  $J$  the ideal generated by the relations  $s_{R_a} = r_a$  for  $a = 1, \dots, k$ . Since we have assumed  $\bar{\Delta} \neq 0$ , Proposition 4.11 yields that  $\bar{\Lambda}_{(k)} = \mathbb{R}[\bar{s}_1]$ . There exists one morphism from  $\mathbb{R}[\bar{s}_1]$  to  $\mathbb{R}$  for each real root of the minimal polynomial of  $\bar{s}_1$ , which is  $\bar{\Xi}$  because  $\deg(\bar{\Xi}) = k! = \dim(\bar{\Lambda}_{(k)})$ . Let  $t$  be the root of  $\bar{\Xi}$  with maximal modulus. It is positive since  $\bar{\Xi}$  is the characteristic polynomial of the irreducible matrix  $\Phi_{(r_1, \dots, r_k)}$ , and moreover it is the Perron–Frobenius eigenvalue of  $\Phi$ . Then, the specialization  $\bar{s}_1 = t$  yields a morphism from  $\bar{\Lambda}_{(k)}$  to  $\mathbb{R}$ , and by extension a morphism  $\tilde{\varphi}$  from  $\Lambda_{(k)}$  to  $\mathbb{R}$ . In particular, the equality (2) holds for  $\tilde{\varphi}$ , and the vector  $X = (\tilde{\varphi}(s_{\lambda}^{(k)}))_{\lambda \in \mathcal{P}_{\text{irr}}}$  is the eigenvector of  $\Phi$  corresponding to the Perron–Frobenius eigenvalue  $t$  and such that  $X(\emptyset) = 1$ . Therefore,  $\tilde{\varphi}$  is positive on  $\mathcal{I}$ . So we have proved the existence of an extension of  $\varphi$  with the right properties in the case where  $\Delta \neq 0$ .

We now drop the hypothesis  $\Delta = 0$ . Consider  $\vec{r} = (r_1, \dots, r_k)$  such that the matrix  $\Phi$  is irreducible. For any extension  $\tilde{\varphi}$  (if any) of  $\varphi$  positive on  $\mathcal{I}$ , the equality (2) still holds. Therefore,  $X^{\vec{r}} = (\tilde{\varphi}(s_{\lambda}^{(k)}))_{\lambda \in \mathcal{P}_{\text{irr}}}$  should then be the eigenvector of  $\Phi$  corresponding to the Perron–Frobenius eigenvalue  $t_{\vec{r}}$  and such that  $X^{\vec{r}}(\emptyset) = 1$ . For  $\mu \in \mathcal{B}_k$ , set

$$(6) \quad \tilde{\varphi}_{\vec{r}}(s_{\mu}^{(k)}) = \prod_{a=1}^k r_a^{p_a^{\mu}} X^{\vec{r}}(\tilde{\mu}) \text{ with } s_{\mu}^{(k)} = \prod_{a=1}^k s_{R_a}^{p_a^{\mu}} s_{\mu}^{(k)}, \tilde{\mu} \text{ irreducible.}$$

Then, the map  $\tilde{\varphi}_{\vec{r}}$  is an extension of  $\varphi$  which is positive on  $\mathcal{I}$  and nonnegative on the  $k$ -Schur functions by construction. So it just remains to prove that  $\tilde{\varphi}_{\vec{r}}$  is a morphism.

Since  $t_{\vec{r}}$  and  $X^{\vec{r}}$  are continuous functions of  $\vec{r}$  on the set of irreducible matrices, the map  $\tilde{\varphi}_{\vec{r}}$  is a continuous function of  $\vec{r}$ . The hypersurface  $V(\Delta) := \{\Delta(\vec{r}) = 0\}$  is closed in the Zariski topology, thus  $V(\Delta)$  has empty interior in the set  $\Theta = \{\vec{r} \in \mathbb{R}_{\geq 0}^k \mid \Phi_{(r_1, \dots, r_k)} \text{ is irreducible}\}$ . By the previous arguments, for all  $\vec{r} \in \Theta$  outside  $V(\Delta)$ , the map  $\tilde{\varphi}_{\vec{r}}$  is a morphism and  $\vec{r} \mapsto \tilde{\varphi}_{\vec{r}}$  is continuous on  $\Theta$ , thus  $\tilde{\varphi}_{\vec{r}}$  is a morphism for  $\vec{r} \in \Theta \setminus V(\Delta)$ . By Proposition 3.1, the set  $\Theta$  is open. Let  $\vec{r} \in \Theta \cap V(\Delta)$ . Since the interior of  $V(\Delta)$  is empty, one can define a sequence  $\vec{r}^{(n)} \in \Theta \setminus V(\Delta)$  which tends to  $\vec{r} \in \Theta \setminus V(\Delta)$  as  $n$  goes to infinity. Finally we get that  $\tilde{\varphi}_{\vec{r}}$  is a morphism, as desired.

We now prove the uniqueness of the extension  $\tilde{\varphi}$ . Let  $\hat{\varphi}$  be another real extension of  $\varphi$  positive on  $\mathcal{I}$ . By (2), the vector  $\hat{X} = (\hat{\varphi}(s_{\lambda}^{(k)}))_{\lambda \in \mathcal{P}_{\text{irr}}}$  is also a left eigenvector of  $\Phi$  for the positive eigenvalue  $\hat{\varphi}(s_1)$  normalized so that  $\hat{X}_{\emptyset}$  is equal to one. Since  $\hat{X}$  has positive entries, it is the Perron–Frobenius eigenvector of  $\Phi$  and is thus equal to the vector  $X^{\vec{r}}$  defined above. By the morphism property of  $\hat{\varphi}$ , for  $\mu \in \mathcal{B}_k$  such that  $s_{\mu}^{(k)} = \prod_{a=1}^k s_{R_a}^{p_a^{\mu}} s_{\tilde{\mu}}^{(k)}$  with  $\tilde{\mu}$  irreducible, we have

$$(7) \quad \hat{\varphi}(s_{\mu}^{(k)}) = \prod_{a=1}^k \varphi(s_{R_a}^{p_a^{\mu}}) \hat{X}(\tilde{\mu}) = \prod_{a=1}^k r_a^{p_a^{\mu}} X(\tilde{\mu}) = \tilde{\varphi}(s_{\mu}^{(k)}),$$

where we have used the definition of  $\tilde{\varphi}$  given in (6). Therefore,  $\tilde{\varphi} = \hat{\varphi}$ , and we have proven the uniqueness of the extension of  $\varphi$  satisfying the properties of the statement.

(2): Let  $\varphi$  be a positive morphism on  $\Lambda_{(k)}$ . Then, the associated matrix  $\Phi$  is irreducible by Proposition 3.1. Hence, the first part of the proposition yields that  $\varphi$  is uniquely determined by its values on  $\mathcal{R}$ .  $\square$

An immediate consequence of the latter theorem is the description of positive extremal harmonic functions. We define an action of  $\mathbb{R}_{>0}$  on  $\mathcal{F}(\mathcal{B}_k, \mathbb{R}_{\geq 0})$  by

$$t \cdot \varphi(s_{\lambda}^{(k)}) = t^{|\lambda|} \varphi(s_{\lambda}^{(k)}),$$

for  $t > 0$ ,  $\varphi \in \mathcal{F}(\mathcal{B}_k, \mathbb{R}_{\geq 0})$ .

COROLLARY 5.2.

- (1) Let  $\varphi \in \partial\mathcal{H}^+(\mathcal{B}_k)$ , and suppose that  $\varphi$  is positive on the  $k$ -Schur functions. Then,  $\varphi$  is uniquely determined by its values on the  $s_{R_a}$ ,  $1 \leq a \leq k$ .
- (2) Assume the matrix  $\Phi$  associated to  $\varphi$  is irreducible. Then there exists a unique  $t > 0$  such that  $t^{-1} \cdot \varphi$  can be extended to an element of  $\partial\mathcal{H}^+(\mathcal{B}_k)$  positive on  $\mathcal{I}$ .

*Proof.* The only non immediate statement is the second one. Suppose that  $\Phi$  is irreducible. Then, by Theorem 5.1,  $\varphi$  can be extended in a unique way to a morphism  $\tilde{\varphi}$  nonnegative on  $\mathcal{B}_k$  and positive on  $\mathcal{I}$ . Let  $t = \tilde{\varphi}(s_1) > 0$ . Then,  $t^{-1} \cdot \tilde{\varphi}$  is a nonnegative morphism on  $\mathcal{B}_k$  such that  $t^{-1} \cdot \tilde{\varphi}(s_1) = 1$ , which belongs to  $\partial\mathcal{H}^+(\mathcal{B}_k)$ . It is clear that  $t^{-1} \cdot \tilde{\varphi}$  extends  $t^{-1} \cdot \varphi$ . Also if  $\hat{\theta} \in \partial\mathcal{H}^+(\mathcal{B}_k)$  extends  $s^{-1} \cdot \varphi$  with  $s > 0$  and is positive on  $\mathcal{I}$ , then the vector with entries  $s \cdot \hat{\theta}(s_{\lambda}^{(k)})$ ,  $\lambda \in \mathcal{P}_{\text{irr}}$  is an eigenvector for  $\Phi$  associated to the eigenvalue  $s$ . Since it has positive entries, we get  $t = s$  and  $\hat{\theta} = t^{-1} \cdot \tilde{\varphi}$ .  $\square$

REMARK 5.3. It follows also from Proposition 3.1 and Assertion (2) of Theorem 5.1, that each morphism  $\varphi : \mathbb{A} \rightarrow \mathbb{R}$  positive on  $\mathcal{R}$  can be extended in a unique way to a morphism  $\tilde{\varphi} : \Lambda_{(k)} \rightarrow \mathbb{R}_{\geq 0}$  positive on the  $k$ -Schur functions. Also clearly, two distinct such morphisms on  $\mathbb{A}$  will yield distinct extensions on  $\Lambda_{(k)}$ . Thus the morphisms  $\tilde{\varphi} : \Lambda_{(k)} \rightarrow \mathbb{R}_{\geq 0}$  positive on the  $k$ -Schur functions are parametrized by  $\mathbb{R}_{>0}^k$  via the map which associates to each such morphism its values on  $\mathcal{R}$ .

5.2. TWO PARAMETRIZATIONS OF THE POSITIVE MORPHISMS. The more immediate parametrization of the positive morphisms  $\varphi : \Lambda_{(k)} \rightarrow \mathbb{R}$  such that  $\varphi(s_\lambda^{(k)}) > 0$  for any  $k$ -bounded partition is obtained from the factorization property (Corollary 2.11) of the  $k$ -Schur functions. Consider

$$V = \left\{ (h_1, \dots, h_k) \in \mathbb{R}^k \left| \begin{array}{l} JT_{R_i}(h_1, \dots, h_k) > 0, \ i = 1, \dots, k \\ JT_\kappa(h_1, \dots, h_k) > 0, \ \forall \kappa \in \mathcal{P}_{\text{irr}} \end{array} \right. \right\} \subset \mathbb{R}_{>0}^k$$

where we have set  $s_{R_i} = JT_{R_i}(h_1, \dots, h_k)$  and  $s_\kappa = JT_\kappa(h_1, \dots, h_k)$  where  $JT_{R_1}, \dots, JT_{R_k}$  and  $JT_\kappa, \kappa \in \mathcal{P}_{\text{irr}}$  are polynomials in  $\mathbb{R}[X_1, \dots, X_k]$ . To each point in  $V$  corresponds a unique positive morphism  $\varphi$  defined on  $\Lambda_{(k)}$ . Now define

$$U = \{ \vec{r} = (r_1, \dots, r_k) \in \mathbb{R}_{>0}^k \}.$$

As explained in Remark 5.3, the positive morphisms  $\varphi : \Lambda_{(k)} \rightarrow \mathbb{R}$  such that  $\varphi(s_\lambda^{(k)}) > 0$  for any  $\lambda \in \mathcal{B}_k$  are parametrized by  $U$  and we can define a map  $f : U \rightarrow V$  such that

$$f(r_1, \dots, r_k) = (\varphi(h_1), \dots, \varphi(h_k)).$$

The map  $f$  is then continuous on  $U$  since the entries of the matrix  $\Phi$  are and so is its Perron–Frobenius vector normalized at 1 on  $s_\emptyset$ . Moreover, the map  $f$  is bijective by Theorem 5.1 and we have

$$f^{-1} : \left\{ \begin{array}{l} V \rightarrow U \\ (h_1, \dots, h_k) \mapsto (JT_{R_1}(h_1, \dots, h_k), \dots, JT_{R_k}(h_1, \dots, h_k)) \end{array} \right.$$

where the polynomials  $JT_{R_1}, \dots, JT_{R_k}$  are given by the Jacobi–Trudi determinantal formulas. In particular  $f^{-1}$  is continuous on  $V$ .

LEMMA 5.4. *The map  $f$  is bounded on any bounded subset of  $U$ .*

*Proof.* Let  $B \subset U$  be a bounded subset of  $U$ . By definition of  $f$ , for any  $\vec{r} = (r_1, \dots, r_k)$  in  $B$ ,  $\varphi(h_1)$  is the first coordinate of  $f(r_1, \dots, r_k)$  and coincides with the Perron–Frobenius eigenvalue of the matrix  $\Phi$ , that is with its spectral radius. Since the spectral radius of a real matrix is a bounded function of its entries, we get that  $\varphi(h_1)$  is bounded when  $\vec{r}$  runs over  $B$ . To conclude, observe that for any  $a = 2, \dots, k$  we have  $\varphi(h_a) \leq \varphi(h_1)^a$  because  $h_1 = s_1$ , the map  $\varphi$  is multiplicative and  $h_a$  appears in the decomposition of  $s_1^a$  on the basis of  $k$ -Schur functions (which only makes appear nonnegative real coefficients).  $\square$

Now set

$$\bar{U} = \{ \vec{r} = (r_1, \dots, r_k) \in \mathbb{R}_{\geq 0}^k \}$$

and

$$\bar{V} = \left\{ (h_1, \dots, h_k) \in \mathbb{R}^k \left| \begin{array}{l} JT_{R_i}(h_1, \dots, h_k) \geq 0, \ i = 1, \dots, k \\ JT_\kappa(h_1, \dots, h_k) \geq 0, \ \forall \kappa \text{ } k\text{-irreducible} \end{array} \right. \right\} \subset \mathbb{R}_{\geq 0}^k.$$

Since  $JT_{R_1}, \dots, JT_{R_k}$  are polynomials, we can extend  $f^{-1}$  by continuity on  $\bar{V}$  and get a continuous map  $g : \bar{V} \rightarrow \bar{U}$ . But this is not immediate right now that  $g$  is bijective and  $f$  can also be extended to a bijective map from  $\bar{U}$  to  $\bar{V}$ . Observe nevertheless that if we can extend  $f$  by continuity on  $\bar{U}$ , the continuity of  $g$  and  $f$  will imply that  $f \circ g = id_{\bar{V}}$  and  $g \circ f = id_{\bar{U}}$ . Therefore, to extend  $f$  by continuity it will suffice to prove that  $\bar{U}$  and  $\bar{V}$  are homeomorphic by  $f$ .

5.3. EXTENSION OF THE MAP ON  $\bar{U}$ . Let  $\vec{r}_0 \in \mathbb{R}_{\geq 0}^k$ , and denote by  $A(\vec{r}_0)$  the set of limiting values of  $f(\vec{r})$  as  $\vec{r}$  goes to  $\vec{r}_0$  in  $\bar{U} = \mathbb{R}^k$ . Recall the notation of the previous paragraph, in particular the function  $g$  is defined and continuous on  $\bar{V}$  and  $g = f^{-1}$  on  $f(U)$ .

LEMMA 5.5. *The set  $A(\vec{r}_0)$  is a connected subset of  $\mathcal{R}_{\vec{r}_0}$  (see Definition 4.10).*

*Proof.* Consider  $K_n = B(\vec{r}_0, \frac{1}{n}) \cap \mathbb{R}_{>0}^k$ . This is a system of decreasing bounded connected neighborhoods of  $\vec{r}_0$  in  $\mathbb{R}_{>0}^k$ . By definition,  $A(\vec{r}_0) = \bigcap_{n \geq 1} \overline{f(K_n)}$ . By Lemma 5.4, we know that  $f$  is bounded on bounded subsets of  $U = \mathbb{R}_{>0}^k$ , therefore we get that  $f(K_n)$  is bounded and thus  $\overline{f(K_n)}$  is compact. Since  $f$  is continuous on  $U$  and  $K_n$  is connected,  $f(K_n)$  is also connected, which implies that  $\overline{f(K_n)}$  is connected. Hence,  $A(\vec{r}_0)$  is a decreasing intersection of connected compact sets, and thus  $A(\vec{r}_0)$  is connected.

Let  $\vec{h} \in A(\vec{r}_0)$ . Then, there exists a sequence  $(\vec{r}_n)_{n \geq 1}$  in  $U$  converging to  $\vec{r}_0$  such that  $\vec{h}_n := f(\vec{r}_n)$  converges to  $\vec{h}$  as  $n$  goes to infinity. Since  $g = f^{-1}$  on  $\mathbb{R}_{>0}^k$ ,  $g(\vec{h}_n) = g \circ f(\vec{r}_n) = \vec{r}_n$  for  $n \geq 1$ . Moreover, since  $g$  is continuous and  $(\vec{h}_n)_{n \geq 1}$  converges to  $\vec{h}$  as  $n$  goes to infinity,

$$g(\vec{h}) = \lim_{n \rightarrow \infty} g(\vec{h}_n) = \lim_{n \rightarrow \infty} \vec{r}_n = \vec{r}_0$$

which implies that  $\vec{h} \in \mathcal{R}_{\vec{r}_0}$ . □

THEOREM 5.6.

- (1) *The map  $f$  is an homeomorphism from  $\bar{U}$  to  $\bar{V}$ .*
- (2) *The morphisms  $\varphi : \Lambda_{(k)} \rightarrow \mathbb{R}$  nonnegative on the  $k$ -Schur functions are parametrized by  $\mathbb{R}_{\geq 0}^k$ .*

*Proof.* (1): The set  $A(\vec{r}_0)$  is a connected subset by the previous lemma and it is also finite by Proposition 4.12. Therefore, the set  $A(\vec{r}_0)$  is a singleton. In particular,  $f(\vec{r})$  converges to some  $f(\vec{r}_0)$  as  $\vec{r}$  tends to  $\vec{r}_0$ , and  $f$  can be extended by continuity on  $\mathbb{R}_{\geq 0}^k$ . As explained at the end of § 5.2, this suffices to conclude that  $f$  is an homeomorphism from  $\bar{U}$  to  $\bar{V}$ .

(2): By the first part of the theorem, it suffices to prove that any morphism  $\varphi : \Lambda_{(k)} \rightarrow \mathbb{R}$  nonnegative on the  $k$ -Schur functions is in the closure of the set of positive morphisms. Let  $\varphi_0 : \Lambda_{(k)} \rightarrow \mathbb{R}$  be a positive morphism (for example, one can take the image of any element of  $U$  by  $f$ ). Then, for any nonnegative morphism  $\varphi : \Lambda_{(k)} \rightarrow \mathbb{R}$  and  $0 \leq t \leq 1$ , one can define the convolution morphism  $\varphi *_t \varphi_0$  by the formula

$$\varphi *_t \varphi_0(f) = ((1-t) \cdot \varphi \otimes t \cdot \varphi_0) \Delta(f)$$

for  $f \in \Lambda_{(k)}$ , where  $\Delta$  is the coproduct on  $\Lambda_{(k)}$ . Since  $\Delta$  is an algebra morphism from  $\Lambda_{(k)}$  to  $\Lambda_{(k)} \otimes \Lambda_{(k)}$ ,  $\varphi *_t \varphi_0$  is indeed a morphism. Let  $\lambda \in \mathcal{B}_k$  and  $s_\lambda^{(k)}$  the corresponding  $k$ -Schur function. Then, by [7, Corollary 8.1],

$$\Delta(s_\lambda^{(k)}) = \sum_{\substack{\mu, \nu \in \mathcal{B}_k \\ |\mu| + |\nu| = |\lambda|}} C_{\mu, \nu}^{\lambda, (k)} s_\mu^{(k)} \otimes s_\nu^{(k)}$$

with nonnegative coefficients  $C_{\mu, \nu}^{\lambda, (k)}$ . Since  $\Delta$  is the usual coproduct from the ring of symmetric functions, we moreover have  $C_{\lambda, \emptyset}^{\lambda, (k)} = C_{\emptyset, \lambda}^{\lambda, (k)} = 1$ , so that

$$\varphi *_t \varphi_0(s_\lambda^{(k)}) = (1-t) \cdot \varphi(s_\lambda^{(k)}) + t \cdot \varphi_0(s_\lambda^{(k)}) + \sum_{\substack{|\mu| + |\nu| = |\lambda| \\ \mu, \nu \neq \emptyset}} C_{\mu, \nu}^{\lambda, (k)} (1-t)^{|\mu|} \varphi(s_\mu^{(k)}) t^{|\nu|} \varphi_0(s_\nu^{(k)}).$$

Since  $\varphi_0(s_\lambda^{(k)})$  is positive and all terms in the above sums are nonnegative,  $\varphi *_t \varphi_0(s_\lambda^{(k)})$  is positive for all  $t > 0$ . Hence,  $\varphi *_t \varphi_0$  is a positive morphism and  $\varphi *_t \varphi_0$  converges to  $\varphi$  as  $t$  goes to zero. Thus,  $\varphi$  is in the closure of the set of positive morphisms.  $\square$

EXAMPLE 5.7. For  $k = 2$ , we get for the matrix associated to  $\vec{r} = (r_1, r_2) \in \mathbb{R}_{\geq 0}^2$

$$\Phi = \begin{pmatrix} 0 & r_1 + r_2 \\ 1 & 0 \end{pmatrix}$$

whose greatest eigenvalue is  $\sqrt{r_1 + r_2}$  with associated normalized left eigenvector  $(1, \sqrt{r_1 + r_2})$ . We thus get  $\vec{h} = f(\vec{r}) = (\sqrt{r_1 + r_2}, r_1)$  since  $h_1 = \sqrt{r_1 + r_2}$  and  $h_2 = r_1$ . Conversely, we have  $g(\vec{h}) = (h_2, h_1^2 - h_2)$ . If we assume  $h_1 = 1$ , we get  $\partial\mathcal{H}^+(\mathcal{B}_2) = \{(1, h_2) \mid h_2 \in [0, 1]\}$ .

## 6. MARKOV CHAINS ON ALCOVES

6.1. CENTRAL MARKOV CHAINS ON ALCOVES FROM HARMONIC FUNCTIONS. Recall the notation of § 2.1 for the notion of reduced alcove paths. A probability distribution on reduced alcove paths is called central when the probability  $p_\pi$  of the path  $\pi = (A_1 = A^{(0)}, A_2, \dots, A_m)$  only depends on  $m, A_1$  and  $A_m$ , that is only on its length and its alcoves ends. In the situation we consider, affine Grassmannian central random paths correspond to central random paths on  $\mathcal{B}_k$ . Similarly, affine (non Grassmannian) central random alcove paths correspond to central random paths on the Hasse diagram  $\mathcal{G}_k$  of the weak Bruhat order. They are determined by the positive harmonic functions on  $\mathcal{B}_k$  and  $\mathcal{G}_k$ , respectively (see [4]).

More precisely any central probability distribution on the affine Grassmannian alcove paths can be written

$$p_\pi = \frac{h(\mu)}{h(\lambda)}$$

where  $h \in \mathcal{H}^+(\mathcal{B}_k)$  is positive and for any path  $\pi = (A_1, \dots, A_m)$ ,  $\mu$  and  $\lambda$  are the  $k$ -bounded partitions associated to  $A_1$  and  $A_m$ . Also we then get a Markov chain on  $\mathcal{B}_k$  (or equivalently on the affine Grassmannian elements) with transition matrix

$$\Pi(\lambda, \mu) = \frac{h(\mu)}{h(\lambda)}.$$

When  $h$  is extremal, it corresponds to a morphism  $\varphi$  on  $\Lambda_{(k)}$  with  $\varphi(s_{(1)}) = 1$ , nonnegative on the  $k$ -Schur functions. We get an extremal central distribution on the trajectories starting at  $A^{(0)}$  verifying  $p_\pi = \frac{\varphi(s_\mu^{(k)})}{\varphi(s_\lambda^{(k)})}$ . The associated Markov chain has then the transition matrix  $\Pi(\lambda, \mu) = \frac{\varphi(s_\mu^{(k)})}{\varphi(s_\lambda^{(k)})}$ .

6.2. COMPARISON WITH LAM'S UNIFORM DISTRIBUTION. The probability distribution on reduced alcoves paths used by Lam in [8] does not coincide with ours in general: at each step of such a path, an alcove is chosen uniformly with the condition that each hyperplane can be crossed only once. It is not difficult to check that such a distribution is not central when  $k \geq 3$ . One can for example compare the probability of two paths from the fundamental alcove to a suitable alcove on the border of the dominant Weyl chamber with one path remaining always on the border and not the other (or equivalently by comparing the probabilities of two paths in the graph  $\mathcal{B}_k$  from  $\emptyset$  to a suitable column partition with one path containing only column partitions and not the other).

The case  $k = 2$  is very particular because  $\mathcal{B}_2$  has then a very simple regular structure which imposes that the probability of any path from  $\emptyset$  to the 2-restricted

partition  $\lambda$  is equal to  $(\frac{1}{2})^{\lfloor \frac{|\lambda|}{2} \rfloor}$ . In particular, Lam's uniform distribution is then central. One can check that in our setting, this correspond to the case where  $s_{R_1} = s_{(2)}$  and  $s_{R_2} = s_{(1,1)}$  are both specialized to  $\frac{1}{2}$ .

6.3. INVOLUTIONS ON THE REDUCED WALK. By Corollary 2.11, the structure of the graph  $\mathcal{B}_k$  is completely determined by the matrix  $\Phi$  depicted in § 3.1 with entries in  $\mathbb{R}[s_{R_1}, \dots, s_{R_k}]$ . Then  $\Phi_{(r_1, \dots, r_k)}$  is the matrix  $\Phi$  after the specialization  $s_{R_1} = r_1, \dots, s_{R_k} = r_k$ . We are going to see that this matrix exhibits particular symmetries coming from the underlying alcove structure.

The first symmetry is due to the action of  $\omega_k$  on  $\Lambda_{(k)}$  which sends  $s_{R_a}$  to  $s_{R_{k-a}}$  for any  $a = 1, \dots, k$ . Since  $\omega_k$  is an algebra morphism, we get for  $1 \leq a_i \leq k$  and  $s \geq 1$

$$\Phi_{(r_1, \dots, r_k)}(\lambda, \mu) = 1 \Leftrightarrow \Phi_{(r_1, \dots, r_k)}(\lambda^{\omega_k}, \mu^{\omega_k}) = 1,$$

and

$$\Phi_{(r_1, \dots, r_k)}(\lambda, \mu) = r_{a_1} + \dots + r_{a_s} \Leftrightarrow \Phi_{(r_1, \dots, r_k)}(\lambda^{\omega_k}, \mu^{\omega_k}) = r_{k+1-a_1} + \dots + r_{k+1-a_s}.$$

Hence, if we denote by  $\Omega$  the matrix of the conjugation  $\omega_k$  on the basis of irreducible partitions, we get

$$(8) \quad \Omega \Phi_{(r_1, \dots, r_k)} \Omega^{-1} = \Omega \Phi_{(r_1, \dots, r_k)} \Omega = \Phi_{(r_k, \dots, r_1)}.$$

For the second symmetry, we need some basic facts about the affine Coxeter arrangement of type  $A_k^{(1)}$ . For any root  $\alpha$  and any integer, let  $H_{\alpha, r}$  be the affine hyperplane

$$H_{\alpha, r} = \{v \in \mathbb{R}^k, \langle v, \alpha \rangle = r\}.$$

We denote by  $s_{\alpha, r}$  the reflection with respect to this hyperplane and for  $\beta$  in the weight lattice  $P$ , we write  $t_\beta$  for the translation by  $\beta$ . We have then  $s_{\alpha, r} = t_{r\alpha} s_{\alpha, 0}$ . For  $w \in W$ , we have the commutation relations

$$(9) \quad wt_\beta = t_{w(\beta)}w, \quad ws_{\alpha, r} = s_{w(\alpha), r}w \quad \text{and} \quad t_\beta s_{\alpha, r} = s_{\alpha, r + \langle \beta, \alpha \rangle} t_\beta.$$

Affine Grassmannian elements are in bijection with alcoves in the dominant Weyl chamber through a map  $w \mapsto A_w$  such that  $w \rightarrow w'$  (that is we have a covering relation for the weak order from  $w$  to  $w'$ ) if and only if there is a hyperplane  $H_{\alpha, r}$  such that  $A_{w'} = s_{\alpha, r}(A_w)$ . In this case, we write  $w \xrightarrow{\alpha, r} w'$ .

Write  $v_w$  for the center of the alcove  $A_w$  (defined as the mean of its extreme weights). With these notations,  $w \xrightarrow{\alpha, r} w'$  if and only if  $v_{w'} = s_{\alpha, r}(v_w)$  and  $r < \langle \alpha, v_{w'} \rangle < r + 1$ .

Any alcove  $A_w$  is completely determined by its center  $v_w$ . Let  $\mathbf{B}$  be the set of alcoves corresponding to affine Grassmannian elements  $w$  such that  $\langle v_w, \alpha_i \rangle \in ]0, 1[$  for any  $i = 1, \dots, k$  (i.e. such that the coordinates of  $v_w$  on the basis of fundamental weights belong to  $]0, 1[$ ). Recall also there is an involution on the Dynkin diagram of affine type  $A_k^{(1)}$  fixing the node 0 and sending each node  $i \in \{1, \dots, k\}$  to  $i^* = k + 1 - i$ . Consider now the involution  $I : \mathbb{R}^k \rightarrow \mathbb{R}^k$  defined by

$$I = t_\rho \circ w_0,$$

where  $\rho = \sum_{i=1}^k \Lambda_i$  and  $w_0$  is the longest element of  $W$ . Observe we indeed get an involution because  $w_0 \circ t_\rho \circ w_0 = t_{-\rho}$ .

LEMMA 6.1. *The involution  $I$  restricts to an involution on the set  $\mathbf{B}$ .*

*Proof.* Consider  $A \in \mathbf{B}$  with center  $v$ . Set  $v = \sum_{i=1}^k \langle v_A, \alpha_i \rangle \Lambda_i$ . Since  $w_0(\Lambda_i) = -\Lambda_{i^*}$  we get  $w_0(v) = \sum_{i=1}^k -\langle v, \alpha_i \rangle \Lambda_{i^*}$ . We also have  $\rho = \sum_{i=1}^k \Lambda_i$  which gives

$$I(v) = t_\rho \circ w_0(v) = \sum_{i=1}^k (1 - \langle v, \alpha_i \rangle) \Lambda_{i^*}.$$

By hypothesis,  $\langle v, \alpha_i \rangle \in ]0, 1[$  for any  $i = 1, \dots, k$  and thus  $1 - \langle v, \alpha_i \rangle \in ]0, 1[$ . Now the coordinates of  $I(v)$  on the basis of fundamental weights all belong to  $]0, 1[$ . This implies that  $I(v)$  is the center of an alcove in  $\mathbf{B}$  and  $I$  restricts to an involution on  $\mathbf{B}$ .  $\square$

LEMMA 6.2. *If  $A, A'$  are two alcoves of  $\mathbf{B}$  such that  $A \xrightarrow{\alpha, r} A'$ , then we have*

$$I(A') \xrightarrow{\alpha^*, \langle \alpha, \rho \rangle - r} I(A),$$

where  $\alpha^* = -w_0(\alpha)$ . In particular,  $A \rightarrow A'$  if and only if  $I(A') \rightarrow I(A)$ .

*Proof.* We have

$$I(A') = t_\rho \circ w_0 \circ s_{\alpha, r}(A) = t_\rho s_{w_0(\alpha), r} w_0(A) = s_{w_0(\alpha), r + \langle \rho, w_0(\alpha) \rangle} t_\rho w_0(A).$$

Since  $w_0(\alpha) = -\alpha^*$  and  $s_{\alpha, r} = s_{-\alpha, -r}$  for any root  $\alpha$ , we get

$$(10) \quad I(A) = s_{\alpha^*, \langle \alpha, \rho \rangle - r} I(A').$$

Moreover, we can write

$$\langle I(v), \alpha^* \rangle = \langle t_\rho \circ w_0(v), \alpha^* \rangle = \langle \rho, \alpha^* \rangle + \langle v, w_0(\alpha^*) \rangle = \langle \rho, \alpha^* \rangle - \langle v, \alpha \rangle$$

where  $v$  is the center of  $A$ . Since  $\langle \rho, \alpha \rangle = \langle \rho, \alpha^* \rangle$ , this yields

$$\langle I(v), \alpha^* \rangle = \langle \rho, \alpha \rangle - \langle v, \alpha \rangle.$$

By hypothesis,  $r - 1 < \langle v, \alpha \rangle < r$ , thus

$$\langle \rho, \alpha \rangle - r < \langle I(v), \alpha^* \rangle < \langle \rho, \alpha \rangle - r + 1.$$

The last inequalities together with (10) imply that

$$I(A') \xrightarrow{\alpha^*, \langle \alpha, \rho \rangle - r} I(A). \quad \square$$

LEMMA 6.3. *Suppose that  $A, A'$  are two elements of  $\mathbf{B}$  such that  $A \xrightarrow{\alpha, r} t_{\Lambda_i} A'$ . Then, we have  $\alpha = \alpha_i, r = 1$ , and*

$$I(A') \xrightarrow{\alpha_{i^*}, 1} t_{\Lambda_{i^*}} I(A).$$

In particular,  $A \rightarrow t_{\Lambda_i} A'$  if and only if  $I(A') \rightarrow t_{\Lambda_{i^*}} I(A)$ .

*Proof.* Since  $A \xrightarrow{\alpha, r} t_{\Lambda_i} A'$ , the alcove  $s_{\alpha, r}(A)$  does not belong to  $\mathbf{B}$ , but belongs to the dominant Weyl chamber. Also  $\mathbf{B}$  is delimited by the affine hyperplanes  $H_{\alpha_i, 0}$  and  $H_{\alpha_i, 1}$  for  $1 \leq i \leq k$ , this implies that  $r = 1$  and  $\alpha$  is a simple root. Since  $t_{-\Lambda_i} s_{\alpha, 1}(A)$  is contained in the dominant Weyl chamber, this yields that  $\alpha = \alpha_i$ . Let  $v$  and  $v'$  be the centers of  $A$  and  $A'$ , respectively.

Then,  $v = s_{\alpha, r} \circ t_{\Lambda_i} v'$  for  $s_{\alpha, r}(v) = t_{\Lambda_i} v'$ . Using (9) we so derive

$$\begin{aligned} I(v) &= t_\rho \circ w_0 \circ s_{\alpha, r} \circ t_{\Lambda_i}(v') = t_\rho \circ w_0 \circ t_{\Lambda_i} \circ s_{\alpha, r - \langle \alpha, \Lambda_i \rangle}(v') \\ &= t_\rho \circ t_{w_0(\Lambda_i)} \circ s_{w_0(\alpha), r - \langle \alpha, \Lambda_i \rangle} \circ w_0(v') \\ &= t_{w_0(\Lambda_i)} \circ s_{w_0(\alpha), r - \langle \alpha, \Lambda_i \rangle + \langle \rho, w_0(\alpha) \rangle} \circ t_\rho \circ w_0(v') \\ &= t_{w_0(\Lambda_i)} \circ s_{w_0(\alpha), r - \langle \alpha, \Lambda_i + \rho \rangle} I(v') \end{aligned}$$

where  $\langle \rho, w_0(\alpha) \rangle = \langle w_0(\rho), \alpha \rangle = -\langle \rho, \alpha \rangle$  for the last equality. From the equality  $w_0(\Lambda_i) = -\Lambda_{i^*}$ , we get

$$t_{\Lambda_{i^*}} I(v) = s_{\alpha^*, \langle \alpha, \Lambda_i + \rho \rangle - r} I(v').$$

Finally, we have  $\langle I(v'), \alpha^* \rangle = \langle \rho, \alpha^* \rangle - \langle v', \alpha \rangle = \langle \rho, \alpha \rangle - \langle v', \alpha \rangle$ , so that the hypothesis  $r < \langle t_{\Lambda_i} v', \alpha \rangle < r + 1$  gives

$$r - \langle \Lambda_i, \alpha \rangle < \langle v', \alpha \rangle < r + 1 - \langle \Lambda_i, \alpha \rangle$$

and

$$\langle \rho + \Lambda_i, \alpha \rangle - r - 1 < \langle I(v'), \alpha^* \rangle < \langle \rho + \Lambda_i, \alpha \rangle - r.$$

So

$$I(w') \xrightarrow{\alpha^*, \langle \alpha, \Lambda_i + \rho \rangle - r} t_{\Lambda_i^*} I(w).$$

Since  $\alpha = \alpha_i$  and  $r = 1$ ,  $\alpha^* = \alpha_i^*$  and

$$\langle \alpha, \Lambda_i + \rho \rangle - r = \langle \alpha_i, \Lambda_i + \rho \rangle - 1 = 1. \quad \square$$

Recall from Section 2.1 that  $\mathcal{B}_k$  is the Hasse diagram for the weak Bruhat order on affine Grassmannian elements. We also have a bijection which associates to  $\lambda \in \mathcal{B}_k$  its corresponding affine Grassmannian element  $w_\lambda$ . Let  $1 \leq a \leq k$ . Since the multiplication of  $s_\lambda^{(k)}$  by  $s_{R_a}$  is simply  $s_{\lambda \cup R_a}^{(k)}$ , there exists a map  $T_a$  on the set of alcoves in the Weyl chamber such that  $T_a(A_{w_\lambda}) = A_{w_{\lambda \cup R_a}}$ . By [2], interpreting  $k$ -Schur functions as elements of the affine nilCoxeter algebra yields that  $T_a$  coincides with the translation  $t_{\Lambda_a}$  on the alcoves of the dominant Weyl chamber. In particular, the partition  $\lambda$  is irreducible if and only if  $A_{w_\lambda}$  belongs to  $\mathcal{B}$ . By the definition of the matrix  $\Phi_{(r_1, \dots, r_k)}$  in Section 3.1 we have  $\Phi_{(r_1, \dots, r_k)}(\lambda, \mu) = 1$  if  $\lambda$  and  $\mu$  are two irreducible partitions such that  $\lambda \rightarrow \mu$  on  $\mathcal{B}_k$ , and  $\Phi_{(r_1, \dots, r_k)}(\lambda, \mu) = r_{a_1} + \dots + r_{a_s}$  if and only if  $\lambda \rightarrow (\mu \cup R_{a_1}), \dots, \lambda \rightarrow (\mu \cup R_{a_s})$  on  $\mathcal{B}_k$ .

PROPOSITION 6.4. *There exists an involutive permutation matrix  $\mathbf{l}$  such that*

$$\mathbf{l} \Phi_{(r_1, \dots, r_k)} = \Phi_{(r_k, \dots, r_1)}^t$$

for any  $(r_1, \dots, r_k) \in \mathbb{R}_{\geq 0}^k$ .

*Proof.* Let us write  $\Phi = \Phi_{(R_1, \dots, R_k)}$  and  $\Phi_{(R_k, \dots, R_1)}$  for the matrix  $\Phi$  in which each  $R_a$  is flipped in  $R_{k-a+1}$ . We get that

$$(11) \quad \begin{cases} \Phi_{(R_1, \dots, R_k)}(\lambda, \mu) = 1 \iff w_\lambda \rightarrow w_\mu \\ \Phi_{(R_1, \dots, R_k)}(\lambda, \mu) = s_{R_{a_1}} + \dots + s_{R_{a_s}} \iff w_\lambda \rightarrow t_{\Lambda_{a_1}} w_\mu, \dots, w_\lambda \rightarrow t_{\Lambda_{a_s}} w_\mu. \end{cases}$$

By Lemma 6.1, it makes sense to consider the matrix  $\mathbf{l}$  of the restriction of the involution  $I$  on the basis  $\mathcal{I}$ . By Lemma 6.2 and (11),  $\Phi_{(R_1, \dots, R_k)}(\lambda, \mu) = 1$  if and only if  $\Phi_{(R_k, \dots, R_1)}^t(I(\mu), I(\lambda)) = 1$ , and  $\Phi_{(R_1, \dots, R_k)} = s_{R_{a_1}} + \dots + s_{R_{a_s}}$  if and only if  $\Phi_{(R_1, \dots, R_k)}^t(I(\mu), I(\lambda)) = s_{R_{k+1-a_1}} + \dots + s_{R_{k+1-a_s}}$ . Since nonzero entries of  $\Phi_{(R_1, \dots, R_k)}$  are either 1 or a sum  $R_{i_1} + \dots + R_{i_s}$  with  $1 \leq i_j \leq k$ , this shows that  $\mathbf{l} \Phi_{(R_1, \dots, R_k)} = \Phi_{(R_k, \dots, R_1)}^t$  and thus by specializing  $\mathbf{l} \Phi_{(r_1, \dots, r_k)} = \Phi_{(r_k, \dots, r_1)}^t$ .  $\square$

The matrix  $\Phi_{(r_1, \dots, r_k)}$  exhibits thus two symmetries relating to the  $k$ -conjugation and the involution  $I$ .

PROPOSITION 6.5. *The matrices  $\mathbf{l}$  and  $\Omega$  commute, and*

$$(\mathbf{l}\Omega)\Phi_{(r_1, \dots, r_k)}(\mathbf{l}\Omega)^{-1} = (\mathbf{l}\Omega)\Phi_{(r_1, \dots, r_k)}(\mathbf{l}\Omega) = \Phi_{(r_1, \dots, r_k)}^t.$$

*Proof.* In order to show that  $\Omega$  and  $\mathbf{l}$  commute, it suffices to show that the involutions  $I$  and  $\omega_k$  commute at the level of their action on alcoves in the dominant Weyl chamber. On the one hand,  $I$  is the operator  $t_\rho w_0$ . On the other hand,  $\omega_k$  sends the  $(k+1)$ -core associated to  $\lambda$  to its usual conjugate. Hence, if we have the reduced decomposition  $w_\lambda = s_{i_1} s_{i_2} \dots s_{i_k}$ , we get the reduced decomposition  $w_{\omega(\lambda)} = s_{i_1^*} \dots s_{i_k^*}$ . This implies



that the action of  $\omega_k$  on the alcoves coincide with that of  $-w_0$  which commutes with  $t_\rho w_0$  because

$$t_\rho \circ -id = t_\rho w_0(-w_0) = -w_0 t_\rho w_0 = -id \circ t_{-\rho}.$$

So we have  $\mathbb{I}\Omega = \Omega$ . The second part of the proposition is a direct consequence of Proposition 6.4 and (8).  $\square$

DRIFT UNDER HARMONIC MEASURES. Let  $\mathcal{A}_k$  be the set of alcoves in the dominant Weyl chamber. We denote by  $\Gamma_f(\mathcal{A}_k)$  the set of reduced finite alcove paths which start at  $A^{(0)}$  and remain in the dominant Weyl chamber. For any  $A$  in  $\mathcal{A}_k$ , write  $\lambda_A \in \mathcal{B}_k$  its corresponding  $k$ -bounded partition. Conversely recall that for any  $\lambda \in \mathcal{B}_k$ ,  $A_{w_\lambda} \in \mathcal{A}_k$  is the alcove associated to  $\lambda$ . Let  $\varphi$  be an extremal harmonic measure on  $\mathcal{B}_k$  associated to  $\vec{r} = (r_1, \dots, r_k) \in \mathbb{R}^k$ , and let  $(A_n)_{n \geq 1}$  be the central Markov chain on  $\mathcal{A}_k$  defined in § 6.1. By considering for each  $n \geq 1$  the center  $v_n$  of the alcove  $A_n$ , we get a genuine random walk  $(v_n)_{n \geq 1}$  on  $\mathbb{R}^k$ . Our goal is now to prove the law of large numbers for this random walk. This will be obtained by using the matrix  $\Phi = \Phi_{r_1, \dots, r_k}$  and a reduced version of the walk  $(v_n)_{n \geq 0}$ . For simplicity, we will assume that  $\Phi$  is irreducible. Nevertheless, by continuity arguments, Theorem 6.8 below also holds in full generality.

Observe that 1 is the maximal eigenvalue of  $\Phi$  for  $\varphi$  is assumed extremal harmonic. We denote by  $X$  the corresponding left eigenvector of  $\Phi$  normalized so that  $X(\emptyset) = 1$ . Let  $\widehat{X}$  be the right eigenvector also for the eigenvalue 1 normalized so that  $(X, \widehat{X}) = 1$  (here  $(\cdot, \cdot)$  is the usual scalar product on vectors).

Let  $\mathcal{M}_k$  be the multigraph with set of vertices  $\mathbb{B}$  such that for each affine reflection  $s_{\alpha, r}$ , we have an edge between  $A$  and  $A'$  when  $A' = s_{\alpha, r} A$  or  $t_{\Lambda_i} A' = s_{\alpha, r} A$ . We color each edge  $e$  by colors in  $\{0, 1, \dots, k\}$  so that  $c(e) = i$  if  $\alpha = \alpha_i$  is simple and with  $c(e) = 0$  otherwise <sup>(4)</sup>. Let  $(\tilde{A}_n)_{n \geq 1}$  be the Markov chain on the graph  $\mathcal{M}_k$  starting on  $A^{(0)}$  with transition probabilities  $\tilde{\mathbb{P}}(A \xrightarrow{e} A') = r_{c(e)} \frac{X(\lambda_{A'})}{X(\lambda_A)}$ , with the convention  $r_0 = 1$ . Note that  $(\tilde{A}_n)_{n \geq 1}$  is indeed a random walk, since

$$\sum_{\substack{e, A' \\ A \text{ gives } A' \text{ through } e}} r_{c(e)} \frac{X(\lambda_{A'})}{X(\lambda_A)} = \sum_{A, A'} \Phi_{\lambda_A, \lambda_{A'}} \frac{X(\lambda_{A'})}{X(\lambda_A)} = \frac{X(\lambda_A)}{X(\lambda_A)} = 1.$$

The weight  $\text{wt}(\gamma)$  of a path  $\gamma = A_0 \xrightarrow{e_1} A_1 \xrightarrow{e_2} \dots \xrightarrow{e_n} A_n$  is defined by  $\text{wt}(\gamma) = \sum_{i=1}^n \Lambda_{c(e_i)}$ , with the convention that  $\Lambda_0 = 0$ . We denote by  $\ell$  the associated length function. Let  $\Gamma_f(\mathcal{M}_k)$  and  $\Gamma_f(\mathcal{A}_k)$  be respectively the sets of finite paths on  $\mathcal{M}_k$  and  $\mathcal{A}_k$  starting at  $A_0$ .

We define  $p : \Gamma_f(\mathcal{M}_k) \rightarrow \mathcal{A}_k$  by  $p(\gamma) = \gamma(n) + \text{wt}(\gamma)$ , where  $n$  is the length of  $\gamma$ , and we extend the map  $p$  to a map  $L : \Gamma_f(\mathcal{M}_k) \rightarrow \Gamma_f(\mathcal{A}_k)$  where  $L(\gamma) = (p(A_0), p(A_0, A_1), \dots, p(A_0, \dots, A_n))$ . Let  $M : \Gamma_f(\mathcal{A}_k) \rightarrow \Gamma_f(\mathcal{M}_k)$  be the map which sends a path  $(A_0 \rightarrow A_1 \dots \rightarrow A_n)$  to the path  $(\tilde{A}_0 \xrightarrow{e_1} \tilde{A}_1 \xrightarrow{e_2} \dots \xrightarrow{e_n} \tilde{A}_n)$ , where  $e_i$  is the unique edge from  $\tilde{A}_{i-1}$  to  $\tilde{A}_i$  such that  $c(e_i) = j$  if  $A_i = s_{\alpha_j, k} A_{i-1}$  for some  $k \in \mathbb{Z}_{>0}$  and  $1 \leq j \leq k$ , and  $e_i$  is the unique edge from  $\tilde{A}_{i-1}$  to  $\tilde{A}_i$  with color 0 if  $A_i = s_{\alpha, k} A_{i-1}$  with  $\alpha$  non-simple and  $k \in \mathbb{Z}_{>0}$ . It is easy to see that  $LM = id_{\Gamma_f(\mathcal{A}_k)}$  and  $ML = id_{\Gamma_f(\mathcal{M}_k)}$ .

LEMMA 6.6. *The image of the Markov chain  $(\tilde{A}_n)_{n \geq 0}$  through the map  $L$  is exactly the Markov chain  $(A_n)_{n \geq 0}$ .*

<sup>(4)</sup>Observe that  $\mathcal{M}_k$  is the graph with adjacency matrix  $\Phi$  except that each arrow with weight  $r_{i_1} + \dots + r_{i_m}$  is split in  $m$  arrows with weights  $r_{i_1}, \dots, r_{i_m}$ .

*Proof.* Let  $\gamma$  be a finite path in  $\mathcal{M}_k$  of weight  $\text{wt}(\gamma)$  and ending at  $\bar{A}$ . By the Markov kernel defined above,

$$\tilde{\mathbb{P}}(\gamma) = r^{\text{wt}(\gamma)} X(\lambda_{\bar{A}}),$$

where  $r^{\text{wt}(\gamma)} = r_1^{\beta_1} \dots r_k^{\beta_k}$  when  $\text{wt}(\gamma) = \beta_1 \Lambda_1 + \dots + \beta_k \Lambda_k$ , with  $\beta_i \in \mathbb{Z}_{\geq 0}$ . Since  $L(\gamma)$  ends at  $p(\gamma) = A + \text{wt}(\gamma)$  and  $X(\lambda) = \varphi(s_\lambda^{(k)})$  for any  $\lambda \in \mathcal{P}_{\text{irr}}$ , we have

$$\tilde{\mathbb{P}}(\gamma) = \mathbb{P}(L(\gamma)). \quad \square$$

Recall that for any  $n \geq 0$ ,  $v_n$  is the center of the alcove  $A_n$ . Denote by  $x_i(n) = \langle v_n, \alpha_i \rangle$  the position of  $v_n$  along the direction  $\Lambda_i$ .

LEMMA 6.7. *As  $n$  goes to infinity,*

$$\frac{1}{n} x_i(n) \longrightarrow r_i \sum_{\substack{e: A \rightarrow A' \in \mathcal{M}_k \\ c(e)=i}} \hat{X}(\lambda_A) X(\lambda_{A'}).$$

*Proof.* Set  $y_i(n) = \lfloor x_i(n) \rfloor$ . Then,

$$\lim_{n \rightarrow \infty} \frac{1}{n} x_i(n) = \lim_{n \rightarrow \infty} \frac{1}{n} y_i(n).$$

Let  $N \geq 1$  and  $0 \leq n \leq N$ . Suppose that  $y_i(n+1) - y_i(n) = 1$ . Since  $x_i(n) - y_i(n) > 0$ , we have  $\langle v_n, \Lambda_i \rangle < y_i(n+1) < \langle v_{n+1}, \Lambda_i \rangle$ . Hence, the affine hyperplane  $H_{\alpha_i, y_i(n+1)}$  separates the alcoves  $A_n$  and  $A_{n+1}$ , and thus  $A_{n+1} = s_{\alpha_i, y_i(n+1)} A_n$ . Hence,  $y_i(n+1) - y_i(n) = 1$  if and only if the  $n$ -th edge of the path  $M(A_1, \dots, A_N)$  is colored by  $i$ . Hence  $y_i(N)$  is the number of arrows colored by  $i$  in the trajectory  $M(A_1, \dots, A_N)$ . Since  $M(A_1, \dots, A_N)$  is an irreducible random walk on  $\mathcal{M}_k$ , the ergodic theorem for random walks on finite spaces yields that for each edge  $e_0 \in \mathcal{M}_k$  from  $A$  to  $A'$ ,

$$\frac{1}{N} \text{card}(\{e \in M(A = A_1, \dots, A_N = A'), e = e_0\}) \xrightarrow[n \rightarrow \infty]{a.s.} m(A) \tilde{\mathbb{P}}(A \xrightarrow{e} A'),$$

where  $m$  is the invariant measure on  $\mathcal{M}_k$  with respect to  $\tilde{\mathbb{P}}$ . We have

$$\tilde{\mathbb{P}}(\bar{A}_n = A' \mid \bar{A}_{n-1} = A') = \sum_{e \text{ from } A \text{ to } A'} r_{c(e)} \frac{X(\lambda_{A'})}{X(\lambda_A)} = \Phi_{\lambda_A, \lambda_{A'}} \frac{X(\lambda_{A'})}{X(\lambda_A)},$$

thus the corresponding invariant measure is the unique vector  $m$  such that  $\sum_{A \in \mathcal{M}_k} m(A) = 1$  and

$$\sum_A \Phi_{\lambda_A, \lambda_{A'}} \frac{X(\lambda_{A'})}{X(\lambda_A)} m(A) = m(A').$$

We get that  $\left( \frac{m(A)}{X(\lambda_A)}, A \in \mathcal{M}_k \right)$  is a left eigenvector of  $\Phi$  with eigenvalue 1, thus is proportional to  $(\hat{X}(\lambda_A), A \in \mathcal{M}_k)$ . In fact it is equal to  $\hat{X}(\lambda_A)$  since  $m$  is a measure and  $(X, \hat{X}) = 1$  so  $m(A) = X(\lambda_A) \hat{X}(\lambda_A)$ . This gives

$$\begin{aligned} \frac{1}{N} \text{card}(\{e \in M(v_1, \dots, v_N), e = e_0\}) &\xrightarrow[n \rightarrow \infty]{a.s.} X(\lambda_A) \hat{X}(\lambda_A) r_{c(e_0)} \frac{X(\lambda_{A'})}{X(\lambda_A)} \\ &= \hat{X}(\lambda_A) X(\lambda_{A'}) r_{c(e_0)}. \end{aligned}$$

Since  $y_i(N)$  is the number of arrows colored by  $i$  in the trajectory  $M(A_1, \dots, A_N)$  we obtain

$$\frac{1}{N} y_i(N) \xrightarrow[n \rightarrow \infty]{a.s.} r_i \sum_{\substack{e: A \rightarrow A' \\ c(e)=i}} \hat{X}(\lambda_A) X(\lambda_{A'}). \quad \square$$

For any alcove  $A$ , set  $\bar{A} = \Omega(A)$ .

THEOREM 6.8.

- (1) As  $n$  goes to infinity, the normalized random walk  $(\frac{1}{n}v_n)_{n \geq 1}$  converges almost surely to a vector  $v_\varphi \in \mathbb{R}^k$ .
- (2) Moreover for any  $i = 1, \dots, k$  the coordinate of  $v_\varphi$  on  $\Lambda_i$  satisfies

$$v_\varphi(i) = \varphi \left( \frac{s_{R_i}}{\sum_{A \in B} s_{\lambda_A}^{(k)} s_{\lambda_{\bar{A}}}^{(k)}} \sum_{\substack{e: A \rightarrow A' \\ c(e)=i}} s_{\lambda_{\bar{A}}}^{(k)} s_{\lambda_{A'}}^{(k)} \right)$$

which is a rational function on  $\mathbb{R}^k$ .

*Proof.* The previous lemma proves the first part of the theorem. It also shows that

$$v_\varphi(i) = r_i \sum_{\substack{e: A \rightarrow A' \\ c(e)=i}} \widehat{X}(\lambda_A) X(\lambda_{A'}).$$

By Proposition 6.5, the coordinates of the vector  $\widehat{X}$  are such that  $\widehat{X}(\lambda_A) = \frac{1}{\nabla} X(\lambda_{\Omega(A)})$  for any  $A \in B$  where  $\nabla = \sum_{A \in B} X(\lambda_A) X(\lambda_{\bar{A}})$ . Since the coordinates of  $X$  are the  $\varphi(s_\lambda^{(k)})$  with  $\lambda$  irreducible, we can write

$$v_\varphi(i) = \frac{1}{\nabla} r_i \sum_{\substack{e: A \rightarrow A' \\ c(e)=i}} \varphi(s_{\lambda_{\bar{A}}}^{(k)} s_{\lambda_{A'}}^{(k)}) = \varphi \left( \frac{s_{R_i}}{\sum_{A \in B} s_{\lambda_A}^{(k)} s_{\lambda_{\bar{A}}}^{(k)}} \sum_{\substack{e: A \rightarrow A' \\ c(e)=i}} s_{\lambda_{\bar{A}}}^{(k)} s_{\lambda_{A'}}^{(k)} \right).$$

Proposition 7.1 below applied with  $t = 1$  will imply that  $v_\varphi(i)$  is indeed a rational function in  $(r_1, \dots, r_k)$  and so  $v_\varphi$  is rational in  $(r_1, \dots, r_k)$ . □

### 7. SOME CONSEQUENCES

7.1. LIMIT FORMULAS IN THE CASE  $\varphi(\Delta) = 0$ . For any  $k$ -irreducible partition  $\kappa$ , we know by § 4.2 that there exists a polynomial  $P_\kappa \in \mathbb{A}[T]$  such that

$$(12) \quad s_\kappa^{(k)} = \frac{P_\kappa(s_1)}{\Delta}$$

here  $\Delta \in \mathbb{A}$  is the determinant of the transition matrix between the bases  $\{s_{(1)}^a \mid 0 \leq a \leq k! - 1\}$  and  $\mathcal{I} = \{s_\kappa^{(k)} \mid \kappa \in \mathcal{P}_{\text{irr}}\}$ . For any morphism  $\varphi : \Lambda(k) \rightarrow \mathbb{R}$  nonnegative on the  $k$ -Schur functions and such that  $\varphi(\Delta) \neq 0$  we thus get

$$(13) \quad \varphi(s_\kappa^{(k)}) = \frac{\varphi(P_\kappa)(\varphi(s_1))}{\varphi(\Delta)}.$$

Moreover,  $\varphi(P_\kappa)$  and  $\varphi(\Delta)$  are directly determined by the values  $r_a = \varphi(s_{R_a})$ ,  $a = 1, \dots, k$  since  $P_\kappa$  and  $\Delta$  belong to the subalgebra  $\mathbb{A}$ . Also  $\varphi(s_1)$  is the spectral radius of the matrix  $\Phi = \varphi(\Phi)$ .

Now assume that the morphism  $\varphi$  associated to  $\vec{r}$  is such that  $\varphi(\Delta) = 0$ . Then, we can consider a sequence  $(\vec{r}_n)_{n \geq 0}$  in  $U = \mathbb{R}_{\geq 0}^k$  such that each morphism  $\varphi_n := f(\vec{r}_n)$  satisfies  $\varphi_n(\Delta) \neq 0$ . By continuity of the map  $f$  we then get for any  $k$ -irreducible partition  $\kappa$

$$\varphi(s_\kappa^{(k)}) = \lim_{n \rightarrow \infty} \frac{\varphi_n(P_\kappa)(\varphi_n(s_1))}{\varphi_n(\Delta)}$$

so that the formulas (13) extends by continuity. In particular we then have  $\varphi(P_\kappa)(s_1) = 0$ . Alternatively, one can consider for any nonnegative real  $s$ , the sets  $\bar{V}_s = \{\vec{h} \in \bar{V} \mid h_1 = s\}$  and  $\bar{U}_s = g(\bar{V}_s)$ . For any  $\vec{r} \in \bar{U}_s$  such that  $\Delta(\vec{r}) = \varphi(\Delta) \neq 0$  write  $\tilde{P}_\kappa^s(\vec{r}) = \varphi(P_\kappa)(s)$ . We also set  $\varphi(s_\kappa^{(k)}) = s_\kappa^{(k)}(\vec{r})$ .

PROPOSITION 7.1. For each irreducible  $k$ -bounded partition  $\kappa$ , the function  $\vec{r} \mapsto s_{\kappa}^{(k)}(\vec{r})$  is continuous on  $\bar{U}_s$  and rational. We have

$$(14) \quad s_{\kappa}^{(k)}(\vec{r}) = \frac{\tilde{P}_{\kappa}^s(\vec{r})}{\Delta(\vec{r})}.$$

In particular, the coordinates of  $f$  are continuous rational functions on each  $\bar{U}_s$ .

7.2. THE MINIMAL BOUNDARY OF  $\mathcal{B}^{(3)}$ . For  $k = 3$ , one can easily picture the domains  $\bar{V}_1$ . The condition to get a positive morphism  $\varphi$  indeed reduces to  $\varphi(s_1) \geq 0, \varphi(s_2) = \varphi(h_2) \geq 0, \varphi(s_3) = \varphi(h_3) \geq 0, \varphi(s_{(1,1)}) = \varphi(e_2) \geq 0, \varphi(s_{(1,1,1)}) = \varphi(e_3) \geq 0, \varphi(s_{(2,1)}) \geq 0, \varphi(s_{(2,1,1)}) \geq 0$  and  $\varphi(s_{(2,2)}) \geq 0$ . We get moreover by a simple computation

$$s_{(2,1,1)}^{(3)} = s_{(2)}s_{(1,1)}$$

thus  $\varphi(s_{(2,1,1)}^{(3)}) \geq 0$  does not add any new constraint. We also have  $\varphi(h_1) = \varphi(s_1) = 1$  and the Jacobi–Trudi relations  $e_2 = h_1^2 - h_2, e_3 = h_1^3 + h_3 - 2h_2h_1, s_{(2,1)} = h_2h_1 - h_3$  and  $s_{(2,2)} = h_2^2 - h_3h_1$ . Now by using that  $\varphi(s_1) = 1$  one can see that the previous inequalities are equivalent to

$$(15) \quad h_1 = 1, 0 \leq h_2 \leq 1, 0 \leq h_3 \leq h_2^2 \text{ and } 2h_2 - h_3 \leq 1.$$

By setting  $x = \varphi(h_2)$  and  $y = \varphi(h_3)$ . This gives the domain  $\bar{V}_1 = \partial\mathcal{H}^+(\mathcal{B}_3)$  delimited in the picture below by the  $x$  abscissa, the blue line and the red parabola.

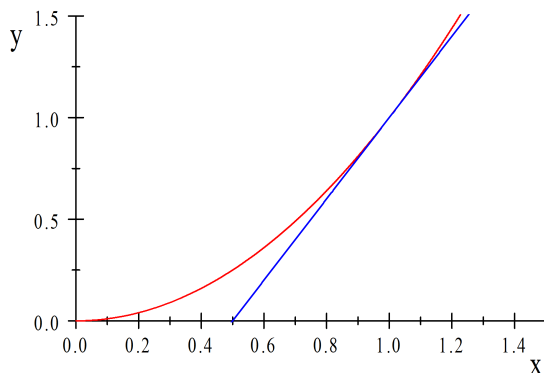


FIGURE 2. Region  $\bar{V}_1$  in  $x = h_2$  and  $y = h_3$  coordinates delimited by the three curves  $h_3 = 0, s_{(2,2)} = 0$  and  $e_3 = 0$ .

REMARK 7.2. If we consider the points of  $\bar{V}_1 = \partial\mathcal{H}^+(\mathcal{B}_3)$  such that  $h_3 = 0$ , we get the domain  $\{(1, h_2, 0) \mid h_2 \in [0, \frac{1}{2}]\}$ . From Example 5.7, one sees that its projection in  $\mathbb{R}^2$  is only strictly contained in  $\partial\mathcal{H}^+(\mathcal{B}_2) = \{(1, h_2) \mid h_2 \in [0, 1]\}$  (see § 7.4).

7.3. MINIMAL BOUNDARY OF  $\mathcal{B}_k$ . By homogeneity of the Schur functions, one gets that for any  $\vec{r} = (r_1, r_2, \dots, r_k) \in \mathbb{R}_{\geq 0}^k$  and any positive real  $t$

$$(16) \quad f(t^k r_1, t^{2(k-1)} r_2, \dots, t^k r_k) = (t h_1, \dots, t^k h_k).$$

Also with the notation of § 7.1, we obtain that  $\partial\mathcal{H}^+(\mathcal{B}_k) = \bar{V}_1$  is homeomorphic to  $\bar{U}_1$ . It follows from (16) that for each nonnegative real  $s$ , the sets  $\bar{U}_s$  and  $\bar{V}_s$  are completely determined by  $\bar{U}_1$  and  $\bar{V}_1$ , respectively. Also, we can associate to any element  $\vec{r} \in \mathbb{R}_{\geq 0}^k$  the element in  $\partial\mathcal{H}^+(\mathcal{B}_k)$  obtained by computing  $\vec{h} = f(\vec{r})$  and next

renormalizing it according to (16) so that its first coordinate becomes equal to 1. We also have the following description of the minimal boundary:

PROPOSITION 7.3.  $\partial\mathcal{H}^+(\mathcal{B}_k)$  is homeomorphic to  $\mathcal{S}_k = \{(r_1, \dots, r_k) \in \mathbb{R}_{\geq 0}^k \mid r_1 + \dots + r_k = 1\}$ .

*Proof.* We already know that  $\partial\mathcal{H}^+(\mathcal{B}_k) = \bar{V}_1$  is homeomorphic to  $\bar{U}_1$ . Also any  $\vec{r} = (r_1, \dots, r_k)$  in  $\bar{U}_1$  is nonzero. There thus exists a unique positive real  $t(\vec{r})$  such that  $t^k r_1 + t^{2(k-1)} r_2 + \dots + t^k r_k = 1$ . This follows from the fact that the polynomial function  $p(t) = t^k r_1 + t^{2(k-1)} r_2 + \dots + t^k r_k$  strictly increases on  $\mathbb{R}_{>0}$  with  $p(0) = 0$  and  $\lim_{t \rightarrow +\infty} p(t) = +\infty$ . Then,  $t(\vec{r})$  is the unique real root of the polynomial  $p(T) - 1$ . The function  $t : \vec{r} \rightarrow t(\vec{r})$  is continuous on  $\bar{U}_1$ , therefore the function  $u : \bar{U}_1 \rightarrow \mathcal{S}_k$  defined by

$$u(r_1, \dots, r_k) = (t(\vec{r})^k r_1, t(\vec{r})^{2(k-1)} r_2, \dots, t(\vec{r})^k r_k)$$

is well-defined and continuous. If  $u(\vec{r}) = u(\vec{R})$  with  $\vec{r}$  and  $\vec{R}$  in  $\partial\mathcal{H}^+(\mathcal{B}_k)$ , we have by applying  $f$  :

$$f(u(\vec{r})) = (t(\vec{r})^k, t(\vec{r})^{2(k-1)} r_2, \dots, t(\vec{r})^k r_k) = (t(\vec{R})^k, t(\vec{R})^{2(k-1)} r_2, \dots, t(\vec{R})^k r_k) = f(u(\vec{R})).$$

Thus  $t(\vec{r}) = t(\vec{R})$  and we get  $\vec{r} = \vec{R}$  so that  $u$  is injective. Now, for any  $\vec{r} = (r_1, \dots, r_k) \in \mathcal{S}_k$ , there exists  $s > 0$  such that  $\vec{r}_s := (s^k r_1, s^{2(k-1)} r_2, \dots, s^k r_k)$  belongs to  $\partial\mathcal{H}^+(\mathcal{B}_k)$ . We then have  $u(\vec{r}_s) = \vec{r}$ .  $\square$

By observing that  $\Lambda_{(k)} = \mathbb{R}[h_1, \dots, h_k] = \mathbb{R}[e_1, \dots, e_k]$  is in fact isomorphic to the algebra  $\Lambda[X_1, \dots, X_k]$  of symmetric polynomials in  $k$  variables  $X_1, \dots, X_k$  over  $\mathbb{R}$ , we can also get information on the values taken by these variables for each point of  $\partial\mathcal{H}^+(\mathcal{B}_k)$ . For any  $r = 1, \dots, k$ , write for short  $E_r = \frac{\tilde{P}_{(1^k)}^1(\vec{r})}{\Delta(\vec{r})}$ . Each  $E_r$  is a rational function on  $\bar{U}_1$  which associates to an element of  $\bar{U}_1$  the value of  $\varphi(e_r)$  for the associated morphism  $\varphi$ .

PROPOSITION 7.4. For each  $\vec{h} \in \partial\mathcal{H}^+(\mathcal{B}_k)$ , there exists a unique  $\vec{x} = (x_1, \dots, x_k) \in \mathbb{C}^k$  such that the associated morphism  $\varphi : \Lambda_{(k)} \rightarrow \mathbb{R}$ , nonnegative on the  $k$ -Schur functions, coincides with the specialization

$$\varphi(P(X_1, \dots, X_r)) = P(x_1, \dots, x_r).$$

Moreover  $\vec{x}$  is determined by the roots of the polynomial

$$\zeta(T) = \prod_{r=1}^k (1 + T x_r) = 1 + t + \sum_{r=2}^{k-1} E_r T^{r-1} + r_k T^k$$

where  $E_1, \dots, E_r$  are rational continuous functions on  $\bar{U}_1$ .

EXAMPLE 7.5.

- (1) For  $k = 2$ , we have  $E_1 = 1$  and  $E_2 = r_2$  so that

$$\zeta(T) = 1 + t + t^2 r_2.$$

- (2) For  $k = 3$ , we get by resuming Example 4.9 and using the equality  $\Xi(1) = 1 - 2(r_1 + r_3) - 4r_2 + (r_1 - r_3)^2 = 0$ .

$$E_1 = 1 \text{ and } E_2 = \frac{1}{2}(r_3 - r_1 + 1).$$

This gives

$$\zeta(T) = 1 + T + \frac{1}{2}(r_3 - r_1 + 1)T^2 + r_3 T^3.$$

In that simple case we get in fact polynomial functions independent of  $r_2$ .



$T_{>0}$ . Indeed, with the previous notation, if the minor  $\Delta_L$  associated to  $U$  is equal to the Schur function  $s_\lambda$ , then the corresponding minor in  $U(t)$  is equal to  $t^{|\lambda|} s_\lambda$ . The set  $T_{\geq 0}$  is stable by matrix multiplication and we moreover get from Proposition 10 in [3] that the product matrix  $U(t)M$  is totally positive. Since  $U(t)$  tends to the identity matrix when  $t$  tends to 0, we obtain that  $U(t)M$  tends to  $M$  as desired.  $\square$

Observe in particular that for any  $a = 1, \dots, k$ , the initial minor  $\Delta_{[k-a+1, k]}$  gives the value  $r_a$  of the rectangle Schur function  $s_{R_a}$  evaluated in  $(h_1, \dots, h_k)$ . In [20], Rietsch obtained the following parametrization of  $T_{\geq 0}$  by using the quantum cohomology of partial flag varieties.

**THEOREM 7.9.** *The map*

$$\begin{cases} T_{\geq 0} \longrightarrow \bar{U} \\ (h_1, \dots, h_k) \longmapsto (r_1, \dots, r_k) \end{cases}$$

*is a homeomorphism.*

We now reprove this theorem from our preceding results.

**THEOREM 7.10.** *We have  $T_{>0} = V$  and  $T_{\geq 0} = \bar{V}$ , in particular the map  $g : T_{\geq 0} \rightarrow \bar{U}$  is a homeomorphism.*

*Proof.* Observe first we have  $V \subset T_{>0}$ . Indeed we know that each  $k$ -Schur function  $s_\lambda^{(k)}$  evaluated in  $\vec{h} = (h_1, \dots, h_k)$  in  $V$  is positive. This is in particular true when  $\lambda$  is a partition with maximal hook length less or equal to  $k$  but then, we get by Assertion (1) of the previous lemma that the associated Toeplitz matrix is totally positive because such  $k$ -Schur functions coincide with ordinary Schur functions. Next consider a sequence  $\vec{h}_n, n \geq 0$  in  $V$  which converges to a limit  $\vec{h} \in T_{>0}$ . Since  $\vec{h} \in T_{>0}$ , each  $r_a = \Delta_{[k-a+1, k]}(\vec{h}), a = 1, \dots, k$  is positive. Thus  $\vec{r} = (r_1, \dots, r_k)$  belongs to  $U$ . Now  $\vec{h}$  belongs to  $\bar{V}$  and we have  $g(\vec{h}) = \vec{r}$  by definition of  $g$ . Theorem 5.6 then implies that  $\vec{h} \in V$  so  $V$  is closed in  $T_{>0}$ . Now  $V$  is open in  $T_{>0}$  because each  $\vec{h} \in V$  admits a neighborhood contained in  $V \subset T_{>0}$  ( $V$  is an intersection of open subsets by definition). We also have that  $T_{>0}$  is connected (see for example the proof of Proposition 12.2 in [20]). So  $V$  is nonempty both open and closed in  $T_{>0}$  and we therefore have  $T_{>0} = V$ . The second assertion of Lemma 7.8 then gives  $T_{\geq 0} = \bar{T}_{>0} = \bar{V}$ .  $\square$

**REMARKS 7.11.**

- (1) Since  $T_{>0} = V$ , we get by using the initial minors of  $M$  and Assertion (1) of Lemma 7.8 that  $\vec{h}$  belongs to  $V$  if and only if the Schur functions  $s_\lambda$  with  $\lambda$  of maximal hook length less or equal to  $k$  evaluated at  $\vec{h}$  are positive. Thus the criterion to test the positivity of our morphisms reduces to Schur functions and can be performed without using the  $k$ -Schur functions.
- (2) By Theorem 5.6 we are able to compute  $g = f^{-1}$  from the Perron–Frobenius vectors of the matrices  $\Phi$ . So our Theorem 7.10 permits in fact to compute the nonnegative Toeplitz matrix associated to any point of  $\bar{U}$  (i.e. to reconstruct  $M$  from the datum of the minors  $r_1, \dots, r_k$ ).

## 8. PERSPECTIVES

We expect that most of the results contained in this paper can be extended to types  $B, C, D$ . Indeed symplectic and orthogonal analogues of  $k$ -Schur functions have been introduced in [10] and [19]. They satisfy similar Pieri rules and relevant rectangle factorizations which are crucial ingredients in our proofs. This should permit to study

central alcove random walks in the Weyl chambers of types  $B, C, D$ . Another interesting problem is to consider these random walks without the restriction to stay in the Weyl chamber. We ignore if the graph of the weak Bruhat order (analogue of the  $k$ -partition poset in this setting) is then multiplicative and if so, for which underlying commutative algebra. Nevertheless, one can expect to reduce the problem to random alcove walks in Weyl chambers by purely probabilistic arguments.

*Acknowledgements.* Both authors thank the international French-Mexican laboratory LAISLA, the CIMAT and the IDP for their support and hospitality. We are also grateful to J. Guillot for numerous discussions on the combinatorics of alcoves and T. Lam for indicating us references which could permit to extend results of the paper beyond type  $A$ .

## REFERENCES

- [1] Arkady Berenstein, Sergey Fomin, and Andrei Zelevinsky, *Parametrizations of canonical bases and totally positive matrices*, Adv. Math. **122** (1996), no. 1, 49–149.
- [2] Chris Berg, Nantel Bergeron, Hugh Thomas, and Mike Zabrocki, *Expansion of  $k$ -Schur functions for maximal rectangles within the affine nilCoxeter algebra*, J. Comb. **3** (2012), no. 3, 563–589.
- [3] Sergey Fomin and Andrei Zelevinsky, *Total positivity: tests and parametrizations*, Math. Intelligencer **22** (2000), no. 1, 23–33.
- [4] Sergei V. Kerov, *Asymptotic representation theory of the symmetric group and its applications in analysis*, Translations of Mathematical Monographs, vol. 219, American Mathematical Society, Providence, RI, 2003.
- [5] Martin Kreuzer and Lorenzo Robbiano, *Computational commutative algebra. 2*, Springer-Verlag, Berlin, 2005.
- [6] Thomas Lam, *Affine Stanley symmetric functions*, Amer. J. Math. **128** (2006), no. 6, 1553–1586.
- [7] ———, *Schubert polynomials for the affine Grassmannian*, J. Amer. Math. Soc. **21** (2008), no. 1, 259–281.
- [8] ———, *The shape of a random affine Weyl group element and random core partitions*, Ann. Probab. **43** (2015), no. 4, 1643–1662.
- [9] Thomas Lam, Luc Lapointe, Jennifer Morse, Anne Schilling, Mark Shimozono, and Mike Zabrocki,  *$k$ -Schur functions and affine Schubert calculus*, Fields Institute Monographs, vol. 33, Springer, New York; Fields Institute for Research in Mathematical Sciences, Toronto, ON, 2014.
- [10] Thomas Lam, Anne Schilling, and Mark Shimozono, *Schubert polynomials for the affine Grassmannian of the symplectic group*, Math. Z. **264** (2010), no. 4, 765–811.
- [11] Luc Lapointe, Alain Lascoux, and Jennifer Morse, *Tableau atoms and a new Macdonald positivity conjecture*, Duke Math. J. **116** (2003), no. 1, 103–146.
- [12] Cédric Lecouvey, Emmanuel Lesigne, and Marc Peigné, *Conditioned random walks from Kac–Moody root systems*, Trans. Amer. Math. Soc. **368** (2016), no. 5, 3177–3210.
- [13] Cédric Lecouvey and Pierre Tarrago, *Harmonic functions on multiplicative graphs and weight polytopes of representations*, To appear in *Annales de l’Institut Fourier*, <https://arxiv.org/abs/1609.00138>.
- [14] Ian G. Macdonald, *Symmetric functions and Hall polynomials*, second ed., Oxford Mathematical Monographs, The Clarendon Press, Oxford University Press, New York, 1995.
- [15] Johannes Mittmann, *Independence in algebraic complexity theory*, Ph.D. thesis, Universitäts- und Landesbibliothek Bonn, 2013.
- [16] Jennifer Morse and Anne Schilling, *Crystal approach to affine Schubert calculus*, Int. Math. Res. Not. IMRN (2016), no. 8, 2239–2294.
- [17] Neil O’Connell, *A path-transformation for random walks and the Robinson–Schensted correspondence*, Trans. Amer. Math. Soc. **355** (2003), no. 9, 3669–3697.
- [18] Anurag Pandey, *Algebraic independence: Criteria and structural results over diverse fields*, Master’s thesis, Indian Institute of Technology Kanpur, 2015.
- [19] Steven Pon, *Affine Stanley symmetric functions for classical types*, J. Algebraic Combin. **36** (2012), no. 4, 595–622.
- [20] Konstanze Rietsch, *Totally positive Toeplitz matrices and quantum cohomology of partial flag varieties*, J. Amer. Math. Soc. **16** (2003), no. 2, 363–392.
- [21] ———, *A mirror construction for the totally nonnegative part of the Peterson variety*, Nagoya Math. J. **183** (2006), 105–142.



CÉDRIC LECOUEY, Institut Denis Poisson (UMR CNRS 7013), Université de Tours Parc de  
Grandmont, 37200 Tours, France  
*E-mail* : `cedric.lecouvey@lmpt.univ-tours.fr`

PIERRE TARRAGO, Laboratoire de Probabilités, Statistique et Modélisation (UMR CNRS 8001),  
Sorbonne Université, 75005 Paris, France  
*E-mail* : `pierre.tarrago@upmc.fr`